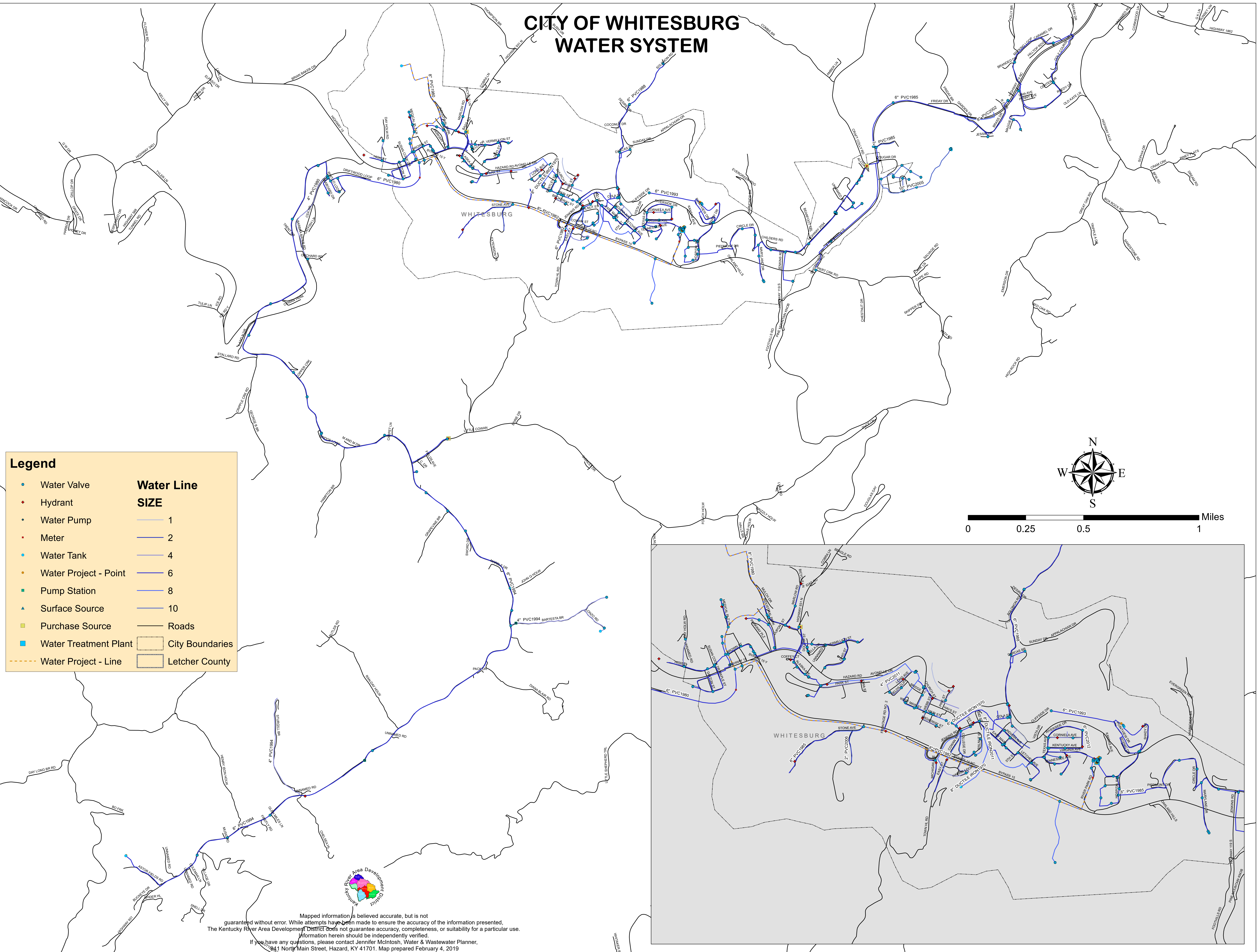
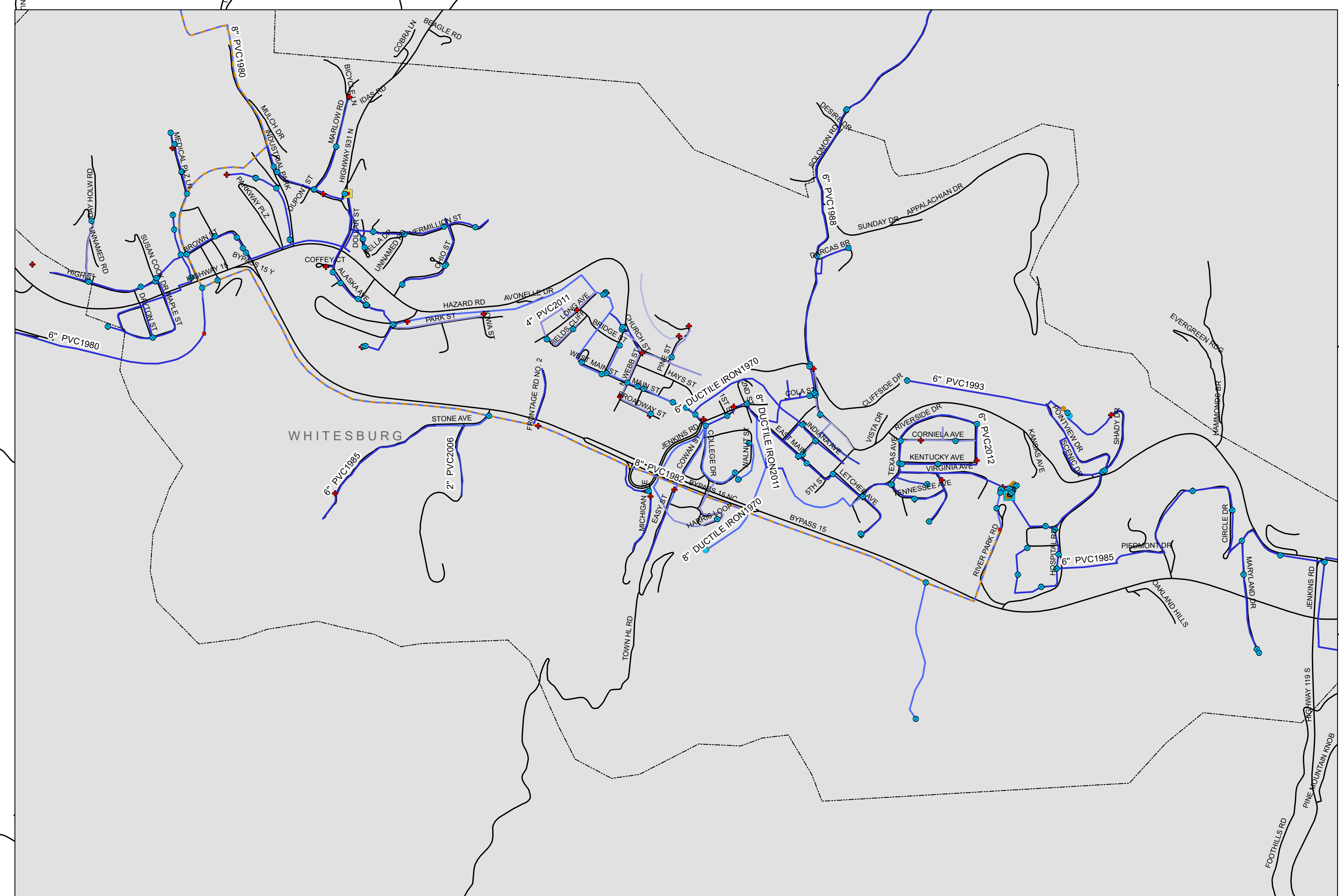
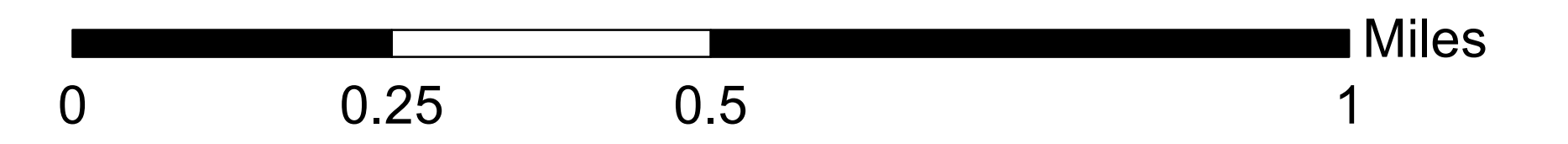
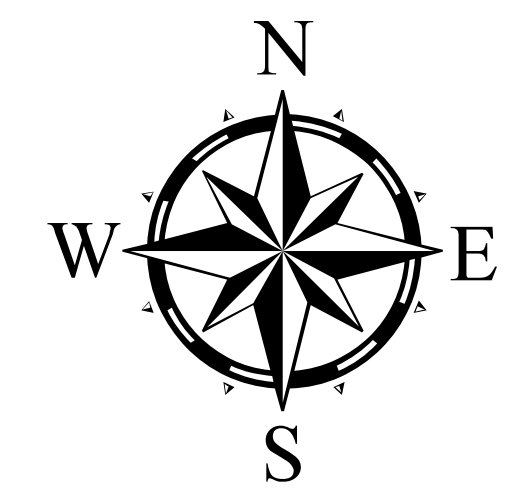


CITY OF WHITESBURG WATER SYSTEM



Legend

• Water Valve		Water Line SIZE
• Hydrant		1
• Water Pump		2
• Meter		4
• Water Tank		6
• Water Project - Point		8
■ Pump Station		10
▲ Surface Source		Roads
■ Purchase Source		City Boundaries
■ Water Treatment Plant		Letcher County
--- Water Project - Line		



Mapped information is believed accurate, but is not guaranteed without error. While attempts have been made to ensure the accuracy of the information presented, The Kentucky River Area Development District does not guarantee accuracy, completeness, or suitability for a particular use. Information herein should be independently verified.

If you have any questions, please contact Jennifer McIntosh, Water & Wastewater Planner, 941 North Main Street, Hazard, KY 41701. Map prepared February 4, 2019