

KENTUCKY RIVER AREA DEVELOPMENT DISTRICT



COMPREHENSIVE ECONOMIC DEVELOPMENT STRATEGY

KENTUCKY RIVER AREA DEVELOPMENT DISTRICT
941 N. MAIN STREET
HAZARD, KY 41701
606-436-3158

2

0

2

1

UPDATE



Comprehensive Economic Development Strategy

Rewrite

I.	EXECUTIVE SUMMARY	1
II.	SUMMARY BACKGROUND	2
	• Organization and Management.....	3
	• Integration of State's Economic Priorities	5
III.	SWOT ANALYSIS	
	}> Economic Background of the Region	
	o Economy	6
	o Workforce Development	8
	o Industrial Parks.....	9
	o Education	12
	o Transportation	14
	o Infrastructure	15
	o Tourism.....	17
	o Technology.....	19
	o Environment	20
	o Population	20
	o Agriculture	21
	o Disaster Mitigation	22
	o Economic Resilience	23
	o Other Plans.....	24
	o Economic Cluster Analysis	25
IV.	ACTION PLAN	
	o Economic Development.....	26

○	Workforce Development	27
○	Industrial Parks.....	27
○	Education.....	28
○	Transportation	28
○	Infrastructure	29
○	Tourism.....	29
○	Technology.....	30
○	Environment	30
○	Strategic Projects	31
•	Past & Present Economic Development Projects	32
•	Transportation Improvements Projects.....	59
•	KRADD Water Prioritization Projects.....	64
•	KRADD Wastewater Prioritization Projects.....	66
V.	EVALUATION AND PERFORMANCE MEASURES	68
VI.	APPENDICES	
○	KRADD Board of Directors	69
○	CEDS Committee	70
○	KRADD Staff.....	71
○	KRADD Demographic Data Updates.....	72
○	Authorizing Resolution.....	77

EXECUTIVE SUMMARY

The Kentucky River Area Development District (KRADD) is a quasi-governmental regional planning agency serving the citizens of Breathitt, Knott, Lee, Leslie, Letcher, Owsley, Perry and Wolfe Counties. Elected officials and citizens from each county make up the region-wide KRADD Board of Directors.

As an Economic Development District, KRADD is responsible for creating and maintaining a regional Comprehensive Economic Development Strategy (CEDS). This document represents the FY 2021 Update of the KRADD's CEDS document.

Completion of the 2021 update is a result of the gathering of information and the participation by various key stakeholders interested in community and economic development. Some of these stakeholders include area chambers of commerce, tourism organizations, industrial authority board of directors members, local elected officials, educational institutes and private businesses. Through this process we have strived to look at both the goals for the region and strategic actions needed to achieve these goals. The CEDS document will act as a guide for the coordination of efforts among local leaders including economic development professionals and agencies.

Success of this plan will be dependent on key stakeholder's participation. It is vital that we continue to collaborate in order to progress economically in our region. Innovation and implementation of new approaches from planning to funding a project are necessary. The downturn of the coal industry coupled with the 2021 COVID 19 Pandemic in our region has opened the doors for a different mindset of collaborating across county lines in regional efforts to grow our local economy. The aspiration of our local leaders is to improve the quality of life for residents in the KRADD region. We must retrain our skilled workforce and strive to make our region economically competitive to attract new businesses to the area.

KRADD will continue to play an important role of bringing our leaders to the table to work together to set goals and objectives in efforts of improving the quality of life in our region. Our planning efforts will include the development and growth in infrastructure, housing, tourism and recreation. Our goals and objectives are outlined in the following pages as well as how we are building resilient communities for our future.

SUMMARY BACKGROUND

The Kentucky River Area Development District region lies in the heart of the Appalachian Mountains of Southeastern Kentucky. For decades coal mining and mining related jobs have been one of the major industries that supported our economy. The downturn in the Coal Industry a few years ago left coal mines cutting shifts and many others closing their doors completely leaving workers without jobs. This decline trickled down to mine related jobs such as mine service, equipment sales and repair, safety enforcement agencies, engineering firms, law firms, etc. The domino effect has left the local retail and service industry struggling which has left leaders across the region as well as our nation scratching their heads wondering what to do next.

2020 saw dramatic changes to our world due to the introduction of the coronavirus. Beginning late 2019, the World Health Organization reported on a highly contagious flu-like virus in China. Healthcare facilities and the department of Health became epicenters for each community. The United States, Kentucky and KRADD saw, and continue to see, dramatic changes to our economy due to the virus in addition to the regional challenges already present.

2021 saw the new Delta Variant of Covid. With the emergence of the virus, cases began to spike again and Perry County, Kentucky became the leading nation in positivity rates. Every community in the KRADD service region has been impacted by the new Delta Variant.

The ever changing demographics of the region present these challenges; outmigration resulting in a decreasing population, high poverty rates, an aging population, a lower than average educational attainment rate, and the ever increasing unemployment rate. With the decline in the employment opportunities many have left our region in search of jobs.

The coal industry continues to fluctuate. In the 4th Quarter of 2017 there was 1,105 employed in coal mining in the KRADD region. In 2018 in the 4th Quarter 1,187 were employed in coal mining. In the 2nd Quarter of 2019, the number employed in coal mining decreased to 990 in the KRADD region. In the 1st Quarter of 2021 there was a continual decrease, leaving 717 employed in coal mining in the KRADD region. The region continues to feel the economic impacts from the decline in the mining industry and related businesses. These impacts are reflected in household income levels, unemployment rates and there is a hesitation by local businesses to make new investments. Unemployment rates in each of the ADD's eight counties have remained high with the average for the KRADD region being 7.3% as of July 2021. The state average for August 2021 period was 4.3%. According to a study from the University of Kentucky, the true unemployment rate for the KRADD region is between 33 to 52 percent. As with other statistics, unemployment numbers reflect the current pandemic economy.

This economic crisis has led to leaders across the region, state and nation coming together breaking down barriers to build resilient communities. Through the POWER initiative and the

collaborative efforts of SOAR (Shaping Our Appalachian Region), the KRADD region is looking beyond coal and breaking a dependency on a single industry. The downturn of the coal industry has left the region with a very marketable workforce that wants to work and is open to learning a new trade or skill. The KRADD region will leverage this resource to bring suitable industry to the area.

Efforts are being made regionally to develop and diversify the workforce of Eastern Kentucky. Eastern Kentucky Concentrated Employment Program (EKCEP) has been instrumental in securing funding to assist former mine related employees to be reskilled to another trade. Since January of 2012 the layoffs have left more than 8,000 coal workers in the 23 county service areas for EKCEP without jobs. Through their Hiring Our Miners Everyday (H.O.M.E.) initiative EKCEP has assisted more than 3,200 to enter training programs, develop new skills and obtain employment.

Education expansion is another major focus for our region. The Galen College of Nursing opened a site in 2017 in Hazard allowing for high quality education for persons entering the nursing field. Our local Community Colleges and EKCEP continue to work closely together expanding educational opportunities for retraining our laid off mining workers. They partnered to offer programs in computer programming and the lineman training programs as a means to reskill some of our workers.

One of the greatest strengths of the mountain terrain in the KRADD region is the scenic beauty which we need to adequately market in an effort to expand tourism opportunities. The area is home to many lakes, rivers, natural rock formations, caves, waterfalls, hiking trails, etc. These natural features attract tourist from across the nation who love to explore what we take for granted every day. Efforts will continue to plan and develop tourism projects such as hiking and biking trails, ATV trails, equestrian trails, zip lining, cave exploration, fishing, kayaking and canoeing opportunities in our lakes and rivers, rock climbing and rappelling in our natural rock formations, etc. We have the best fall foliage to offer as opposed to anywhere in the nation. The opportunities are boundless for tourism expansion in our region.

Healthcare is one of the top employers in the KRADD region. Healthcare continues to see growth in both employment and investments in facilities. The Appalachian Regional Healthcare (ARH) located in Hazard has recently expanded the hospital adding beds and facilities, cancer treatment facilities, heart center, etc. Juniper Health in Jackson is in the process of building a new facility to expand healthcare opportunities. Pikeville Medical Center has added a heart center in Whitesburg. Healthcare expansions across the region are allowing healthcare needs to be met locally. For decades Kentucky River Community Care was the only Behavioral Health provider in the KRADD region. Now many providers are expanding into Behavioral Health including Primary Care Centers of Eastern Kentucky and UK North Fork Valley Community Health Center. All the healthcare expansions provide for employment opportunities and improvements in the quality of life for the region.

It is the long-range goal of the region to build a diverse, sound economy, with employment opportunities and a strong educational system. The principles that lead our goals, objectives

and strategies for future development have remained basically the same and include:

- Assist organizations, local governments, development authorities and others in their efforts to develop the region.
- Develop and market the area as a good place to live and work.
- Work with local government to recruit businesses to locate here.
- Target and recruit new industry into the region.
- Develop a skilled workforce that can compete in a global market.
- Assist and support existing business and industry.
- Develop and support new entrepreneurial activities within the region.
- Investment in infrastructure by the public sector.
- Encourage regional approaches to maximize resources.

The following are the categories that we intend to focus on: Growing a diverse economy; Development and expansion of the region's infrastructure; Broadband access throughout the region; Health care and capitalizing on potential economic opportunities related to health care and related technologies; Promoting and fostering entrepreneurial opportunities and small business development; Enhancing and supporting workforce development and education to meet employer needs; Responsible resource utilization; and tourism marketing and development.

Continued use of this strategy and its corresponding updates will promote new ideas and innovations, create a vital link among all sectors of the regional economy and ultimately help provide solutions to mutual problems.

PUBLIC / PRIVATE PARTNERSHIPS

Organization and Management

A critical element in the creation of the CEDS document is the importance of working together as a region; focusing federal, state, local and private programs and funding toward common goals; and ultimately creating partnerships to stimulate local economic growth.

Local officials, leaders, KRADD board members and committee members as well as KRADD staff utilize individual expertise to identify new ideas, needs and opportunities within their counties and the region. The ultimate goals of this planning process are: 1) to create a two-way flow of information; 2) for the State and the ADD to disseminate information back to the local

communities and individuals; and 3) to allow ordinary citizens the opportunity to voice their concerns and needs for their respective communities.

The Kentucky River Area Development District appointed a CEDS committee to guide the creation of this document. The functions of the committee are to provide:

1. Guidance and broad perspective throughout the CEDS development process.
2. Technical expertise.
3. Identifying community and economic development needs.
4. Identifying goals and strategies, and
5. Development of a Strengths, Weaknesses, Opportunities and Threats (SWOT) for the region.

In addition to the CEDS committee, the following committees of the ADD provided invaluable assistance for the district's CEDS:

- KRADD Board of Directors
- Regional Transportation Committee
- Advisory Council for Aging
- Executive Committee
- Regional Water Management Council

Public input also provided feedback for the development of the Strategy. The document was placed on the KRADD website for public review and comment. The public was invited to all committee meetings. All meetings are open to the public, and participation from everyone at the meetings is highly encouraged.

You will find a table listing the Kentucky River Area Development District's Board of Directors in appendix 1.

Integration of States Economic Priorities

The integration of the state's economic priorities as related to Kentucky's Strategic Economic Development Plan includes priorities for business climate, business development, Kentucky Brand, sustainability, innovation and technology, and entrepreneurial culture. The five targeted categories include: advanced manufacturing, sustainable manufacturing, technology, transportation and healthcare.

The Kentucky River Area Development District CEDS corresponds with the Commonwealth of Kentucky's priorities for economic development through a number of the goals, objectives and strategies in our action plan.

SWOT ANALYSIS

ECONOMY

Some mining is still taking place in the region. The tables in the appendix reflect the decrease in the industry from 2009 to present. The loss of jobs in the mining industry has been detrimental to our region. The unemployment rates in the area continue to stay at a higher rate than the State or National rates. Note that because of the economic impact from the coronavirus, data numbers in 2021 may show significantly highs or lows. The unemployment rate in the District currently stands at an average of 7.3% as of July 2021 in comparison to nationwide at 5.4%. Since 2017 the District has seen the employment in the mining industry fluctuate. In the 4th Quarter of 2017 the District mining employment was 1,105. In the 2nd Quarter of 2019 the mining employment for the District is 990. In the 1st Quarter of 2021 there was a continual decrease, leaving 717 employed in coal mining in the KRADD region. The economic impact is still seen in the median household income levels, unemployment rates, and the general hesitant attitude of local businesses toward making new investments. Unemployment rates in each of the eight counties as of July 2021 were as follows in the KRADD region: Breathitt – 9%, Knott – 7.7%, Lee – 6.2%, Leslie – 8%, Letcher – 7.9%, Owsley – 7.2%, Perry – 6.5%, and Wolfe – 6.4% The Kentucky unemployment rate during this same time was 4.4%.

The region has a high percentage of displaced, "discouraged" workers, who no longer actively seek employment and are, therefore, not included in the official unemployment statistics. Therefore, the official unemployment rates in the region are deceptively lower than actual unemployment. A study by the University of Kentucky Appalachian Center stated that the true unemployment rates for this area range from 33 to 52 percent.

Workforce development agencies are attempting to determine the viable employment options for those unemployed from the mining industry to help direct them to a comparable job and allow them to remain located in the region. Eastern Kentucky Concentrated Employment Program (EKCEP), who serves as the region's Workforce Investment Board, has been successful in securing funding to address these workforce challenges and is currently assisting laid off mine industry workers in retraining for other vocations.

REGIONAL STRENGTHS:

- Available workforce
- Educational Opportunities/Access
- Collaboration
- Positive Workforce
- Work Training Organizations
- Small Business Support
- Availability of land/industrial parks
- Regional Vision
- Natural beauty
- Natural resources
- Availability of Healthcare
- Technology
- Tourism
- Counties are working to become a Certified Work Ready Community
- Availability of Financial Institutions

Three of the KRADD counties, Breathitt, Leslie and Wolfe counties are in the process of becoming a Certified Work Ready Community and have filed a letter of intent. Perry, Lee, Owsley, Letcher and Knott counties have certified work ready in progress. The program is a rigorous certification program to allow communities to demonstrate their workforce quality and help attract industries and jobs.

Retail and service remain among the largest employment sectors in the KRADD region. Economic growth within the District continues to lag behind the State and National performance. Even though personal income has risen over recent years, income from unemployment, retirement, dividends, interest and rent are providing a larger portion of the derived total personal income.

In the Kentucky River ADD area the largest percentage of employees is in the healthcare industry at 27.6%; followed by government workers at 22.8%; the education and service industry employs 15.6%; the retail industry employs 14.6%; Public Administration employs 7%; and, the Mining and quarrying industry at 4.5% of those in the region's workforce. (refer to tables in appendix).

Mining and natural resources continue to be among the higher paid wages for the average worker. We continue to see strong growth in the healthcare business. We have seen expansions in many of our healthcare facilities throughout the region allowing for growth in higher paying jobs in the region.

Over the past year the region has seen unprecedented development funding opportunities pour into the region. In addition to an increase in funding opportunities, economic development growth has diversified. Dajcor Aluminum, a Canadian based company, began operation of their facility in the Coal Fields Regional Industrial Park adding 30 jobs with a 10 year goal of bringing over 200 jobs to the region with competitive wages. The Drone Port in Knott County is beginning construction of their facility with plans to bring 218 jobs to the region. Perry County Fiscal Court and Sykes/Intuit have partnered to bring an additional 300+ jobs to the region with above average wages. The Perry County Fiscal Court and City of Hazard are working collaboratively on the East Perry Commercial Development Project that will construct a new shopping center and create approximately 200 additional jobs. The City of Jackson and Breathitt County Fiscal Court are working collaboratively with Juniper Health and other businesses on projects that will expand infrastructure to the Breathitt County Industrial Park and create an additional 208 jobs. The Lee County Fiscal Court has worked with officials with the Lee County Adjustment Center to reopen the Center creating an additional 240 jobs. Owsley County now has fiberoptic connectivity throughout the entire county, a major perk for industries looking to build or relocate to Owsley County. Many other ongoing economic opportunity projects continue to move forward throughout the region, even as the pandemic adds additional challenges to the process. And the pandemic has had some negative impact to the region's small businesses, with the full impact yet to be determined.

WORKFORCE DEVELOPMENT

Workforce Development efforts in the Kentucky River region are handled by the Eastern Kentucky Concentrated Employment Program (EKCEP), which administers Workforce Innovation and Opportunity Act (WIOA) programs in the 23 mountain counties that comprise Kentucky's Appalachian Region.

REGIONAL WEAKNESSES:

- Housing Inventory
- Lack of entrepreneurs
- Lack of infrastructure/no interstate highways
- Negative Perception
- Aging population
- Aging / deteriorating infrastructure
- Lack of marketing our natural resources / tourism
- Education attainment
- Broadband availability is limited
- Lack of jobs for advanced degree holders
- Outmigration of population
- Dependency on a single industry
- Lack of transportation services
- No goals
- Diminishing coal severance funds

EKCEP also manages the Kentucky Career Center JobSight network of workforce centers, which provide access to more than a dozen programs and services for jobseekers and employers.

Services for jobseekers include: job placement, career planning, skills assessment, vocational rehabilitation, G.E.D. courses, education and training information, student financial assistance, on-the-job training, assistance for older workers, and unemployment insurance.

In response to the radical economic 2020 changes, EKCEP responded to the pandemic by creating the ReWork EKY program which offered career assistance to Kentuckians affected by layoffs due to Covid-19.

Each JobSight center includes a Career Resources Center where jobseekers can prepare a resume, get information about labor markets and in-demand jobs, access the internet to look for jobs, and use a collection of instructional books and videos on topics that range from successful job interview techniques to time management.

Services for employers include: help with finding, screening and testing job applicants; research on the

local labor pool and economy; facilities for interviewing applicants; and help with developing customized or on-the-job training programs.

INDUSTRIAL PARKS

There are eight industrial business parks located within the Kentucky River ADD region. These sites range from 7.5 acres to 385 acres in size and offer a variety of options for new business locations.

The Panbowl Lake Industrial Park is located in Breathitt County. The site has a total of 31 available acres, with a 12 inch water line on site and an 8 inch gravity sewer line 500 feet northwest of the site. There is a 40,500 square feet speculative building located on a 4.4 acre site located within the park. A county-owned manufacturing building, ready to lease with 60,000 SQ FT, a climate-controlled area, access to three-phase power, city water through a 12" ductile iron waterline, city sewer and gas, is also available in the Park. Juniper Health, another resident of the Park, opened doors to a new healthcare facility in January 2020, adding dental services in August 2020. The facility employs 51 people. The Park is owned and maintained by the Breathitt County/City of Jackson Industrial Development Authority.

The Lee County Industrial Park is located 2 miles southwest of Beattyville in Lee County. The original site had a total of 27.6 available acres, with a 6 inch waterline and 8 inch gravity sewer line on site. Jackson Electric Cooperative, Lee County Building Supply, Lee County Public Library and the University of Kentucky Extension Office now reside at the Park. Ten acres were gifted to the UK Extension Office and they now own and maintain the only undeveloped area of the Park.

REGIONAL OPPORTUNITIES:

- Improved Infrastructure
- Marketing
- New business incentives
- Better education opportunities
- Collaboration between leaders
- Training for Workforce
- Grow existing businesses
- Small business incubators
- Diversification from Coal
- Entrepreneurial support services
- Leveraging our available workforce
- Public/Private Partnerships
- Developing Trail Towns
- Aerospace/aviation technology
- Apprenticeship training programs
- Broadband availability
- Tourism



The Gateway Regional Business Park is located near Jenkins in Letcher County. There are 283 available acres in the park at this time. The site is served by a 10 inch water line and an 8 inch gravity sewer line. Gas distribution lines were recently installed. There are Eight businesses located within the park at this time: Hunt Brothers Pizza Wholesale of Lexington, Taylor Metal Roofing & Siding, Inc., W.I.N.G.S. Helipad

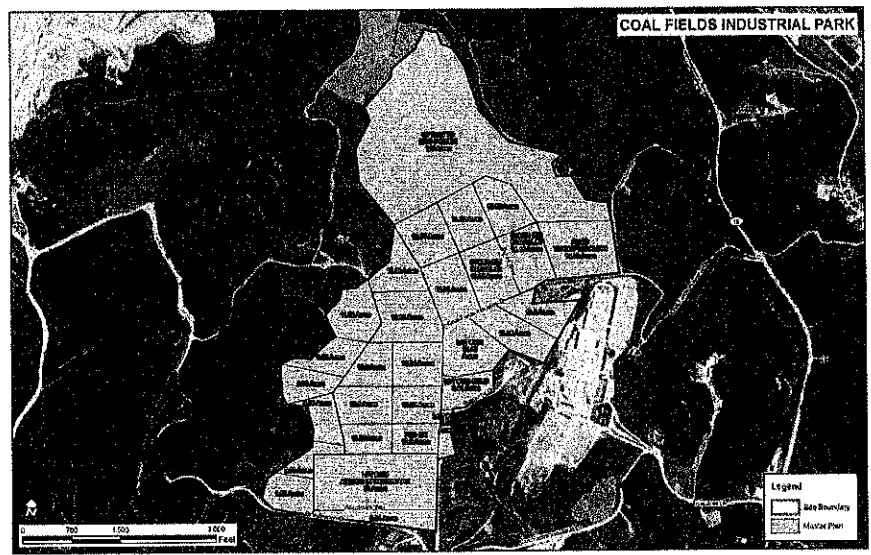
Evacuation, KRCC, East Kentucky Extraction, Davita, Childers Oil, B.J. Services and Equitable Productions. The park is owned and maintained by the Appalachian Industrial Authority, a multi-county authority representing Floyd, Knott, Letcher and Pike counties.

The Whitesburg Industrial Site is located in Whitesburg, Letcher County. The site has approximately 4 available acres, with an 8 inch water line on site and a 10 inch gravity sewer line located 40 feet east of the site, and has wireless internet capability. The Whitesburg sewer plant, Pine Mountain Lumber, and the Soil Conservation office are located at the site. The site host a KY MesONet weather station operated by Western Kentucky University and is owned and maintained by the City of Whitesburg.

The Lone Oak Industrial Park is located 1.5 miles south of Booneville in Owsley County. The Loan Oak Park has 75.1 acres available at this time, with a 6 inch water line and 8 inch gravity sewer line serving the park. There is one available speculative building within the park: a 25,920 square foot building, located on 4.6 acres. There is one business located in the park at this time, Wolfe Creek Metal Fabrication and Cement. The park is owned and maintained by the Owsley County Industrial Authority.

The Coal Fields Regional Business Park is located 10.7 miles northwest of Hazard in Perry County. The park has a total acreage of 385.7, with 338.1 available at this time. There are 8 inch and 12 inch water lines serving the park, as well as 8 inch and 10 inch gravity sewer lines.

Natural Gas was recently constructed in the Park to allow a broadened market to be solicited. There are eight businesses currently located in the park: Dajcor Aluminum, Sykes, Inc/Intuit., FedEx Distribution Center, KSK Services, LLC, Forrester Joseph Trucking, Inc., Cherokee Transport, Inc., Valley Diesel Services, Inc. and Hurley Electrical Contracting. Since the last update, Dajcor has requested



assistance to expand production and a new distribution center has expressed interest in locating in the park. The park is owned and maintained by the Coal Fields Regional Industrial Authority, a multi-county authority representing Perry, Harlan, Leslie, Breathitt and Knott counties.



The Pine Ridge Regional Business Park is located 1 mile west of Campton in Wolfe County. The park has a total acreage of 117.7 with the largest possible tract being 56.6 acres. The site is served by a 6 inch water line and a 6 inch force main sewer line. One business, KY Truss, Inc., is currently located in the park. Recent updates to the park include a contract with Appalachian Wireless for a cell tower to enhance connectivity in Wolfe County. The park is owned and operated by the Pine Ridge Regional Industrial Authority, a multi-county authority representing Breathitt, Lee, Owsley, Powell and Wolfe counties.

The Crystal Creek Industrial Park in Lee County has been transformed into a housing development. The original Park was 110 acres with a 6 inch water line approximately 525 feet west of the site, and a 4 inch force main sewer line adjacent to the western site boundary. The Park is owned and maintained by the Beattyville Housing Authority.



The Swanee Tipple Industrial Park is located in Isom in Letcher County. The park has a total of 4 acres. This location has recently received attention from Letcher County elected officials, KRADD staff and OneEastKy to help market the area for new potential businesses.

EDUCATION

The schools in the Kentucky River area strive to meet all state and federal requirements for primary, secondary and post-secondary education. The KRADD Region is served by following K-12 public school districts:

		SCHOOL TYPE
Breathitt	Breathitt County Schools	K-12
Breathitt	Jackson Independent Schools	K-12
Knott	Knott County Schools	K-12
Knott	June Buchanan	K-12
Lee	Lee County Schools	K-12
Leslie	Leslie County Schools	K-12
Letcher	Letcher County Schools	K-12
Letcher	Jenkins Independent Schools	K-12
Owsley	Owsley County Schools	K-12
Perry	Hazard Independent Schools	K-12
Perry	Perry County Schools	K-12
Wolfe	Wolfe County Schools	K-12

Post-secondary education in the area is provided through the Kentucky Community and Technical College System, with vocational education centers located throughout the area. A listing of education facilities follow:

COUNTY	INSTITUTION	LEVEL
Breathitt	Hazard Community & Technical College, Lees College Campus	Post-secondary
Breathitt	Morehead State University at Jackson	Post-secondary
Breathitt	Breathitt County Area Technology Center	Technical
Knott	Hazard Community & Technical College, Knott County Branch	Post-secondary
Knott	Alice Lloyd College	Post-secondary
Knott	Knott County Area Technology Center	Technical
Lee	Lee County Area Technology Center	Technical K-12
Leslie	Hazard Community & Technical College, Leslie County Branch	Post-secondary
Leslie	Leslie County Area Technology Center	Technical
Letcher	Southeast Community & Technical College, Whitesburg Campus	Post-secondary
Letcher	Letcher County Area Technology Center	Technical
Perry	Hazard Community & Technical College, Technical Campus	Technical
Perry	Hazard Community & Technical College, Main Campus	Post-Secondary
Perry	Galen College of Nursing	Post-Secondary

REGIONAL THREATS:

- Lack of Interstate Highway
- Political Discord
- Outward Migration
- Illegal drug epidemic
- Negative stereotype
- Land affordability
- Diminishing work ethic
- Lack of value in our natural assets for tourism development
- Lack of infrastructure
- Decrease funding on all levels
- Affordability of higher education
- Skilled Workforce leaving area for jobs

Hazard Community and Technical College (HCTC) provides associate's degrees, diplomas, certifications in technology and vocational programs, as well as transfer programs such as Associate in Arts, Associate in Science and Associate in Fine Arts. HCTC also partners with the University of the Mountains to provide baccalaureate degrees from seven four-year colleges and universities.

Galen College of Nursing, Hazard location, provides an associate degree in nursing (ADN), licensed practical nurse (LPN) bridge to ADN, and online access for registered nurses (RN) to continue to a Bachelor of Science (BSN) and Master of Science in Nursing (MSN) degrees. Galen operates on a quarterly enrollment schedule and graduates approximately 200 healthcare workers annually.

The University of the Mountains (UMC) is a dynamic consortium of postsecondary educational institutions bringing more bachelors and master's degrees and educational opportunities close to home in

southeastern Kentucky. Currently UMC is partnered with Eastern Kentucky University (EKU), Hazard Community and Technical College (HCTC), Kentucky Community and Technical College System (KCTCS), Lindsey Wilson College (LWC), Midway University, Morehead State University (MSU), Northern Kentucky University (NKU), UK Center of Excellence in Rural Health and University of the Cumberlands.

This allows access to undergraduate and graduate level degree attainment for both traditional and non-traditional by overcoming challenges (geographical and financial) that have previously made it difficult for Eastern Kentuckians to earn a post-secondary education by bringing select degree programs closer to home.

Alice Lloyd College located in Pippa Passes in Knott County is the only four-year institution in the KRADD region. However, there are a number of four-year institutions within an hour drive from counties within the KRADD area.

TRANSPORTATION

The Kentucky River Area Development District is served by two modes of commercial transportation: public highways and railroads.

Only five of the eight counties within the District are accessed by rail: Lee, Breathitt, Perry, Letcher and Knott Counties. The major use of rail transportation is the movement of coal produced in the area which has drastically reduced in the last 10 years.

The major arterial highways in the ADD include the Hal Rogers Parkway, the Mountain Parkway, KY 80, KY 15, US 119, US 23 and US 421. These major roads along with the network of state secondary and county roads comprise the highway transportation system within the ADD.

There are no commercial air transportation systems with the ADD. Air transportation is available to citizens at Lexington, KY, Knoxville, TN, and Bristol, TN. These commercial airports are all within 1.5 to 2.5 hours driving time from the District.

There are two public airfields in the District which serve the aviation needs of the counties in which they are located. The Julian Carroll Airport, located near Jackson, provides service for small private aircraft. However, the airport does not have adequate runway for larger commercial or corporate aircraft. The Wendell Ford Airport in Perry County has the capacity to accommodate small private aircraft as well as corporate and commercial jet flights.

There is no commercial water transportation within the District. Lee County and the City of Beattyville are the only areas within the ADD that are located on the main stem of the Kentucky River; however, channel siltation and lack of maintenance of locks and dams has limited water transportation to small pleasure craft and fishing boats.

Transportation planning in the District is primarily undertaken by the Kentucky River ADD's Regional Transportation Committee in conjunction with the Transportation Cabinet's District Highway offices serving the eight county Area. Prioritization is done by the Regional Transportation Committee and a list of priority projects are identified in the Strategic Projects section of this report.

INFRASTRUCTURE

There are currently 10 municipal wastewater treatment plants and 5 Special District wastewater plants in the Kentucky River ADD region. These systems serve a total of 8,929 households. Also in the region are 38 package treatment plants serving a variety of businesses, schools, private dwellings, industrial sites, and subdivisions. Only about 20 percent of households in the region are served by municipal or package sewer treatment plants. The remaining households in the area rely on septic systems or illegal straight line pipes to streams to dispose of waste water.

There are 17 water systems in the region, 10 of which have their own water treatment plants. These systems serve a total of 34,606 households. The remaining households in the region rely on private wells, cisterns or hauled water for their potable water needs. Utility providers throughout the region continue to identify and plan for additional projects through the Kentucky River Water Management Council. Project prioritization for these infrastructure projects can be found in the Strategic Projects section of this report.

The following is information on existing wastewater systems in the District:

SYSTEM LOCATION	DATE BUILT OR UPADED	DESIGN (GPD)	AVG DAILY FLOW (GPD)	TYPE DISCHARGE	CUSTOMERS
Beattyville	1996	300,000	350,000	River	730
Booneville	1997	200,000	203,000	River	283
Campton	2004	320,000	323,000	Stream	420
Fleming-Neon	1988	520,000	149,000	Stream	1,117
Hazard	1995	3,000,000	1,999,000	River	2,929
Hindman	1997	120,000	167,000	Stream	460
Hyden	2005	200,000	113,000	River	549
Jackson	1992	750,000	1,000,000	River	1,126
Jenkins	1991	600,000	620,000	Stream	699
KCWSD - Ball Creek	2012	100,000	15,000	Stream	152
KCWSD - Pippa Passes	1985	100,000	114,000	Stream	102
LCWSD - Millstone	2001	9,000	1,000	Leach field	22
Perry County Water & Sewer	1969	100,000	356,000	Stream	125
Perry County Sanitation - Chavies	2015	110,000	5,000	River	110
Perry County Sanitation	-	-	50,000	KISOP	536
Whitesburg	2009	600,000	260,000	River	792

The following is Information on existing water systems in the District:

SYSTEM	DATE BUILT OR UPGRADED	DESIGN (GPD)	CURRENT DEMAND (GPD)	INTAKE SOURCE	STORAGE CAPACITY	CUSTOMERS
Beattyville	2008	2,000,000	900,000	North Fork	1,470,000	2,900
Booneville	1987	720,000	791,000	South Fork	1,503,500	1,800
Breathitt Co. Water District	-	-	232,334	Jackson (Purchase)	1,729,000	1,895
Village of Buckhorn	-	-	64,490	Hazard, BCWD (Purchase)	250,000	275
Campton	2011	1,000,000	650,000	Campton Lake	1,261,000	2,637
Fleming-Neon	2018	360,000	354,000	Mine Shaft	800,000	1,297
Hazard	2002	5,000,000	5,225,000	North Fork	10,760,000	9,771
Hindman	-	-	261,364	KCWSD&SWSD (Purchase)	775,000	847
Hyden/Leslie Co Water District	2012	1,500,000	1,310,000	Middle Fork	2,130,480	3,711
Jackson	2005	2,500,000	1,710,000	North Fork	695,000	2,009
Jenkins	1986	1,000,000	750,000	Elkhorn Lake	750,000	838
Knott Co Water & Sewer District	2009	4,000,000	2,575,000	Carr Fork Lake	3,510,200	3,100
Letcher Co Water & Sewer District		-	592,611	KCWSD/Jenkins PCWS/Whitesburg (Purchase)	900,000	3,032
Mount Carmel High Boarding School	1977	9,000	4,603	2 wells	10,000	13
Perry County Water & Sewer	-	-	211,860	KCWSD (Purchase)	434,000	1,022
Phoenix Place Water System	-	-	28,392	KCWSD (Purchase)	212,000	227
Whitesburg	1994	860,000	836,000	North Fork	1,335,000	1,483

TOURISM

Tourism was one of the largest industries affected by the coronavirus pandemic. Most, not all, local festivals were canceled in 2020 including Hazard's Black Gold Festival, Beattyville's Woolly Worm Festival and the Breathitt County Honey Festival. Attendees to the festivals were encouraged to follow websites and local social media for updates on the events.

As jobs decline from the mining recession, tourism has sparked a great deal of interest across our region. The KRADD region is located in the foothills of the Appalachian Mountains of Eastern Kentucky. The area is home to many lakes, rivers, natural rock formations, waterfalls, hiking trails, etc. As we look to advance tourism opportunities throughout the region, in collaborative efforts, we will showcase our natural assets. These natural features attract individuals throughout the nation.

Governor Matt Bevin signed House Bill 156 on August 31, 2017 at the KRADD Conference Center, an ACT promoting outdoor recreation and tourism development by establishing the Kentucky Mountain Regional Recreation Authority (KMRRRA). In 2021, KMRRRA changed its name to the First Frontier Appalachian Trails Authority. Their trail system will connect existing trails and develop new trails across 19 counties in eastern Kentucky and will be open to ATV's, UTV's and dirt bikes. Many of our counties also have established hiking trails and horse-riding trails.

In Letcher County you can hike the Pine Mountain Trail State Park, visit Lily Cornett Woods and shop the Antique shops between Isom and Blackey on KY Route 7. You can enjoy a day at the Fishpond Lake, hike to Bad Branch Falls, drive the Little Shepherd Trail, take in the breathtaking view from the top of Pine Mountain. Letcher County is home to the several annual festivals such as the Mountain Heritage Festival and the Isom Days Festival which includes an annual rodeo, etc. In Jenkins you can enjoy a day golfing at Raven Rock Golf Course, take a picnic at Raven Rock, do a little fishing at Jenkins Lake, etc. The list goes on and on of tourism activities available in Letcher County, Kentucky.

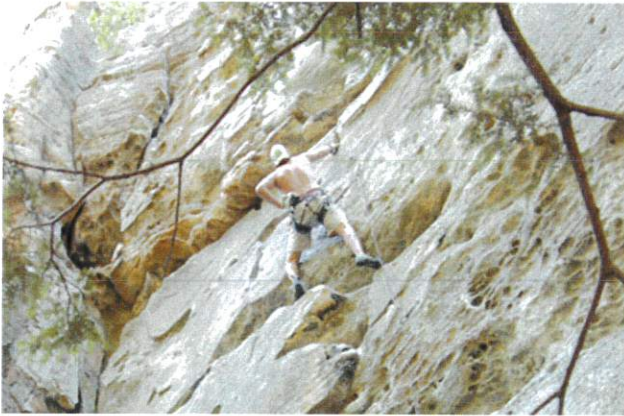
Knott County is host to an annual spring and fall horse trail ride.

This week-long event includes camping and a music venue from popular artist. This event brings in hundreds of people from around the nation each year. You can enjoy a day boating, fishing, jet skiing, swimming and camping at Carr Fork Lake. The ATV Center host events for ATV riding, racing, rock climbing championships, etc. The mine Made Adventure Park is a family-oriented campground located in Knott county, offering miles of horse and ATV trails or the opportunity to sit around the campfire and enjoy the hills of Eastern



Kentucky.

Hunting opportunities are endless with the wildlife population. The Sportsplex Center hosts numerous events each year such as the Kenny Woods Gun and Knife Show.



Lee County, Kentucky is home to world class rock climbing with the many natural rock formations in the Red River Gorge area. Beattyville is where the three forks of the Kentucky River merge providing some of the best canoeing and fishing in the state. You can enjoy hiking, biking, horseback riding or zip lining tours. Beattyville is host to the annual Woolly Worm festival. Visit the museum and war memorial dedicated to those who have served our country.

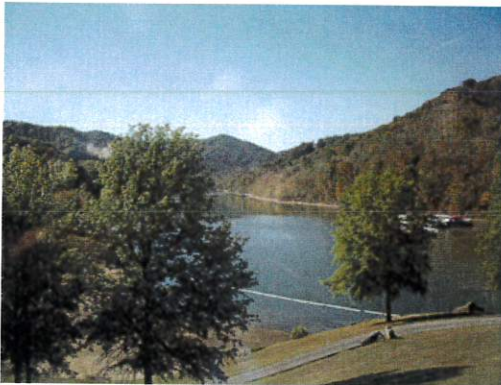
The Breathitt County Honey Festival is an annual event in Jackson, KY. Breathitt County is host to one of the best wildlife viewing sites located at the Southfork Elk Viewing Station. Take in a horse back trail ride in both Spring and Fall. Panbowl Lake is one of the better game fishing lakes in all of Kentucky and has new public fishing pier located on Lakeside Drive. Visit Douthitt and Kiwanis Park for a day of baseball, cooling off in the splash park, canoeing in the river, etc. You can grab a day of golf at Sugar Camp golf course. Breathitt also host the annual Heritage Fair event in Jackson, KY.

Enjoy a weekend with food and festivities at the Mary Breckinridge Festival in Hyden, Kentucky. The Daniel Boone Trail system creates a playground for ATV's, dirt bikes, side-by-side's, horseback riding and hiking. Take on a weekend of camping, boating and fishing at Trace Branch Recreational Area of Buckhorn Lake. Leslie County is an excellent place for hunting and wildlife viewing. During redbud blooming season you can visit the Redbud Capital of the World right here in Hyden, Kentucky.

Enjoy a day of golf at the Sag Hollow Golf Club in Owsley County. The Daniel Boone Festival is held annually to celebrate Owsley County's cultural heritage with fun, music, food and fireworks. Owsley County host a two annual horse shows and trail rides showcasing the county's stunning, scenic beauty. The South Fork of the Kentucky River provides good fishing and canoeing. Take in a day of Noble's Pioneer Museum in Lerosse or hike to the Abraham Lincoln's Rock. Plans are underway to develop a Wildlife Adventure trails that include camping, ATV trails, horseback, hiking trails, a stocked fishing pond as well as many other features. The Owsley County Fiscal Court is working on plans to renovate the old jail into a bed and breakfast.

Wolfe County is located in the heart of the Red River Gorge area and has so much to offer tourist. It features adventurous activities from hiking, zip lining to rock climbing. You can take in the natural rock formations of Chimney Rock and Creation Falls. Enjoy a day of canoeing or fishing at Campton Lake. The rolling hills offer great hunting, hiking and sight-seeing for wildlife. Go kayaking or ride a pontoon in an underground mine. You can find lodging in cabins, yurts and camp sites. Campton is host to the annual Wolfe County Swift Silver Mine Festival.

All trails in Hazard and Perry County lead to adventure and excitement. Trails for your personal adventure include walking, biking, horse-back riding, ATV/dirt bike trails, sight-seeing tours, quilt-block tours and specialty shopping. Hazard-Perry holds the designation of being the 20th Kentucky Trail Town sponsored by the State of Kentucky. Buckhorn Lake offers boating, jet skiing, camping, fishing, hiking, and overnight lodging. The scenery year round from the lodge is



stunning. Watch a Civil War reenactment, take in a horse show, or enjoy great food and festivities at the annual Perry County Fair or the Black Gold Festival. Hazard is the only place in the world you can visit the only Mother Goose House. After an ice and rain storm in late March 2021, the iconic goose head came tumbling down. In August 2021, after months of repairs the goose head was reinstalled and refurbished.



The KRADD region has many tourist activities to offer and efforts will continue to plan and develop projects throughout the area.

TECHNOLOGY

To move our region forward economically it is necessary to advance with technology. Private businesses, government agencies, the healthcare industry and educational institutions depend on internet access and high speed internet accessibility to compete in today's digital world.

Teleworks USA, "an innovative program that is bringing cutting-edge telework (work-from-home) employment opportunities to jobseekers" continues to grow in the KRADD region. EKCEP continues to promote and recruit companies on behalf of its Teleworks USA division. Teleworks USA identifies and develops legitimate remote-work, distance learning opportunities, and helps to prepare people for the jobs. They accomplish this by training them in necessary teleworking skills, working with them on creating résumés and developing superior interviewing skills. Then assist people in applying for and obtaining legitimate work-from-home positions through its website www.teleworksusa.com.

Assessment of the region's broadband use and local government e-services continues. Broadband service is widely available; however, certain geographic areas do not have adequate access. The Kentucky Wired statewide broadband network will be a network of more than 3,000 miles of fiber optic cable for broadband and has completed connectivity to every eastern Kentucky county. This high-capacity, high-speed middle-mile network will bring access closer to

communities. Local service providers will be able to tap into the network to provide last mile services to homes and businesses currently unserved.

With the availability of high-speed internet brings opportunities to bring jobs to our region with the ability to work from home for companies around the world. The Tech Hire Initiative prepares workforce for technology-related employment opportunities.

ENVIRONMENT

The natural beauty of this region drives a large portion of the tourism industry. Lakes, streams, mountainous terrain, and wildlife are the natural attractions for a strong tourism industry.

Historically the region has been plagued by residents and visitors who have disposed of trash in environmentally harmful methods. In addition, the lack of public wastewater services coupled with inappropriate land use and poor soil quality have resulted in polluted waterways. Significant progress has been made in these areas but there continues to be a need for major investments in public infrastructure to alleviate these issues.

Each of the counties in the KRADD region hold annual clean up events to pick up trash along our roadways and remove old appliances, junked vehicles, used tires, etc. from our communities and waters. Perry County has initiated a "Perry Proud" brand in efforts to encourage residents to be good environmental stewards. The Perry County Fiscal Court has installed recycling bins at all county schools and many other locations around Perry County in efforts to promote recycling and the promotion of being better stewards of our environment. Annual events are held to clean up our state parks and lakes.

Projects are in the process of being planned and developed to bring public sewer service into unserved areas to clean up our water ways. Mandatory trash collection ordinances have been passed in our counties to alleviate illegal trash dumps in our communities. Although progress has been made, we still have education, planning and project development to achieve to continue on our path of improving the environment we live in.

POPULATION OF THE REGION

The population trends were analyzed for the KRADD region from 1990 to 2010 as shown in Appendix 4. The population of the KRADD region has declined in excess of 7% over the past 20 years. Wolfe County is the only county in the KRADD region seeing a population growth during the same time span. The counties seeing the largest decrease over the 20 years is Leslie County with 17.3%, Breathitt County with 11.6%, Letcher County with 9.2% and Knott County with 8.7%. Outmigration from the downturn in the coal mining industry is the largest factor affecting population decline. The ACS data shows a steady decline of population in the KRADD region.

AGRICULTURE

In 2017 there were 1005 farm operations with 601 farms over 50 acres and 36 operations over 500 acres in the KRADD region. While direct employment in the sector is small, secondary linkages produce hundreds of jobs in the region. Agriculture still plays a vital role in the economy of the region, contributing millions of dollars from the production of crops and livestock.

As part of a statewide initiative to capitalize upon the numerous agricultural linkages and opportunities for economic growth a program called KADIS (Kentucky Agricultural Data Information Systems) is being developed. KADIS is a partnership between the KY Department of Agriculture, the Governor's Office of Agriculture Policy, the US Economic Development Administration, and the Area Development Districts. It seeks to promote and develop greater linkages among the many farmers, businesses, agencies, institutions, and individuals who collectively play a part in the agri-economy. The project will result in an inclusive geographic database of agricultural resources, information and assets across the Commonwealth of Kentucky. It can be found at <http://kadisonline.org>.

This web-based GIS driven system will create an emphasis on linkages and integration towards future planning and projects that affect the agriculture economy. It is anticipated that the information will become a collaborative dataset available to a wide range of users to enhance development of locally produced and sold agricultural and related products.

Some of the datasets in KADIS include:

- Sites/buildings suitable for agricultural businesses and industry
- Soils data
- Existing agri-businesses and facilities
- Disaster prone facilities, crop loss data, etc. Agricultural friendly land use regulations
- Kentucky Proud facilities, farmers markets, organic products, etc.
- Bio-energy resources/produce and local food resources
- Distribution/aggregation facilities
- Livestock resources
- Land uses including prime farmland, environmentally sensitive and protected areas, etc.
- Workforce development/technical training resources and programs
- Crop production information
- Transportation resources (rail, ports, etc.)
- Linkages to other resources such as water, sewer, etc.

DISASTER MITIGATION AND RESILIENCE

The KRADD region is vulnerable to many forms of natural disasters. Due to the topography, the eight counties in KRADD suffer from frequent flooding disasters, particularly flash flooding. The frequency of these events puts local governments in the position of often times not fully recovering from damages from one event before another occurs. Wildfires destroy thousands of acres of our timber forest every year. Major snow storms, ice storms and droughts are among others our region faces regularly. All these leave devastating economic impacts on our communities. The end result is that the cities and counties in the region find it difficult to focus on long-term economic development projects and planning.

As the area is at risk for so many natural disasters, KRADD through a local planning process in collaboration with our local leaders throughout the region developed the Hazard Mitigation Plan. The plan was originally adopted in 2006 but was updated in 2011 and 2016. The plan provides risk assessment data and mitigation strategies to provide a basis for dealing with risks to life and property from various hazards. It serves as a guide to our cities and counties to outline preparations and responses in reducing the severity of the impact of natural disasters.

The KRADD region is also vulnerable to other forms of disaster, most recently the coronavirus pandemic. In response to the pandemic, the Department of Local Government charged each ADD with creating a mitigation and resilience plan for economic recovery from the virus. The process will follow the same process as the Hazard Mitigation Plan and involve local leaders who will provide risk assessment data and mitigation strategies to keep citizens safe.

In addition to updates to the information in the KRADD Hazard Mitigation Plan, resiliency planning is becoming part of our conversations. Pre-disaster planning and disaster response will become a greater focus area for the region. Included in this effort would be the identification of recovery resources, business continuity planning, shelter identification, communication plans, and recovery activities that are immediate, short-term, and long term. Addressing the special needs and the most vulnerable populations will also need to be included. Identifying first responder needs will be a part of the pre-disaster planning so that resources can be available in advance of disaster events. Helping our businesses resume normal operations is also part of the conversations.

Preventing some disasters is impossible; however, educating our residents of the dangers of disasters is important to saving lives. Teaching our residents to be prepared for emergencies is vital to the recovery. Education is a method of building a resilient community.

ECONOMIC RESILIENCE

The KRADD region has become an example of why it is important to plan for economic resilience. The downturn of the coal industry has left our area economically distressed. The loss of coal mining jobs has resulted in the loss of coal severance tax funds for our cities and counties to fund projects and in search of ways to produce revenue to balance budgets. It has resulted in a loss of population as many migrate to other areas in search of jobs. Coal mining has played a major role in the KRADD economy for decades. We have relied solely on this single industry to keep our economy going.

As a result of this downturn, our region has learned to plan for resiliency. For economic development resiliency includes the ability to quickly recover from a disruption, the ability to withstand a shock or disruption and the ability to avoid the shock altogether. In our efforts to overcome the disruption, the KRADD region is looking to diversify and break the single dependency on coal.

The KRADD region will continue to build economic resilience through steady-state and responsive initiatives to include:

Steady-state initiatives:

- Build a resilient workforce that can better shift between jobs and industries;
- Continue comprehensive planning efforts that include the integration of hazard mitigation, transportation, infrastructure and other planning efforts;
- Target and develop emerging clusters or industries that build on our unique assets and competitive strengths;
- Continue to maintain site data for our industrial parks and other commercial assets; and
- Provide business support for retention and expansion programs to assist with economic recovery.

Responsive Initiatives:

- Collaborate on hazard mitigation plans;
- Coordinate between key stakeholders in efforts to plan for short-term and long-term recovery needs;
- Establish information networks between various stakeholders; and
- Conduct pre-disaster recovery planning.

OTHER PLANS AND STRATEGIES

The Kentucky River Area Development District continues to work with local officials and community leaders to assist in planning efforts to improve the region's competitiveness in the local, regional, national and international economies.

All existing plans and strategies in the eight-county area were reviewed and considered when preparing this document. Some of those plans included in the review were tourism plans, economic development strategies, transportation plans, water and wastewater management plans, downtown revitalization plans, etc.

As a result of the dramatic impacts to the region from the loss of jobs in the mining industry, leaders have joined together across political party lines to take a different approach to improving the regions' economy. The Shaping Our Appalachian Region (SOAR) Initiative began in late 2013 with a Summit convening stakeholders from all walks of life to begin the discussion on diversification and "out-of-the-box" thinking that will change the landscape.

The 2016 SOAR Impact Report provides a blueprint for our region that focuses on economic strategies and can be accessed at <https://www.soar-ky.org/blueprint>.

ECONOMIC CLUSTERS

The KRADD region is home to a variety of clusters, such as wood/timber, healthcare, retail/wholesale trade, tourism, etc. In recent years, healthcare has emerged as a vital industrial cluster in the region, and continues to show promise of future expansion. The following is a brief overview of the economic clusters located within the Kentucky River region:

HEALTHCARE

In recent years, the healthcare industry has emerged as one of the strongest and fastest growing economic clusters in the KRADD region. There are currently 256 healthcare establishments in the eight county regions. As of 2016 there were 5,984 employees in the healthcare industry, with an annual payroll of \$172,659,000.

TIMBER AND WOOD PRODUCTS

The timber and wood products industry has quickly become a vital cluster in the economy of the KRADD region. Currently there are 20 timber related industries in the area.

RETAIL SERVICE

The retail service industry is understandably a vital cluster in any region. Without these basic support services and retail establishments, other industry could not thrive. There are currently 330 retail service establishments in the region. These establishments employed 4,032 people in 2012 according to U.S. Census Bureau County Business Patterns.

MINING

Because Kentucky has been one of the top three coal producing states in the nation for the past fifty years, it should come as no surprise that the coal industry is vital to the economic development of the KRADD region. The eight counties in the region are all located in the Eastern Coal Fields. Although production has decreased across the nation in the past two decades, coal mining remains a way of life for many in the KRADD area. As for the fiscal year of 2021, there are only 16 mining companies open. 2 in Breathitt County, 3 in Knott County, 3 in Leslie County, 5 in Letcher County, 1 in Owsley County and 2 in Perry County. This down from the previous fiscal year having a total of 58 mining companies.

ACTION PLAN

ECONOMIC DEVELOPMENT

GOAL: To enhance the quality of life of residents of the KRADD region through job creation and job retention. Promote economic growth and expansion by maintaining a strong, healthy industry base that will foster internal industry growth while projecting a pro-business image to prospective companies.

OBJECTIVES:

- To recruit new business and industry
- Work with existing businesses on expansion
- Provide support for new and existing businesses
- Promote Industrial Parks
- Encourage industrial site enhancements
- Promote Tourism
- Encourage a regional approach to economic development
- To enhance the region's economic base and general prosperity by encouraging existing businesses to expand their operations and employment
- To attract economic development that will enhance the growth and economy of the KRADD region and improve the quality of life for its citizens

STRATEGY:

- Work with local and state officials, chambers of commerce, economic development professionals and existing businesses to identify and market to new business and industry
- Develop small business incubators
- Work with the local workforce development and other economic development agencies in business expansion support programs
- Continue to market our industrial sites and available buildings
- Assist in the development and funding of enhancing our industrial parks
- Support youth entrepreneurship programs
- Assist in Trail Town Development for our communities
- Assist in trail development activities
- Assist in the development and funding of tourism projects
- Promote the formation of a regional industrial development authority
- Coordinate regional meetings with our local leaders centered on creating opportunities for our counties to partner in economic development
- Implement business retention and expansion program, providing technical and administrative assistance in navigating through regulatory issues and utilizing existing

incentive programs

- Work with local, county and state agencies to develop innovative solutions for growth and expansion needs of local businesses
- Encourage community leaders to become better educated in economic development issues by attending economic development seminars sponsored by economic development agencies and organizations
- Expand and coordinate local industrial recruiting efforts with the Cabinet for Economic Development
- Coordinate the development of small- to medium- sized, publicly owned industrial parks in strategic locations throughout the region, encouraging joint cost and revenue sharing between various counties.
- Assist in infrastructure improvements, when necessary, to facilitate development in targeted growth areas

WORKFORCE DEVELOPMENT

GOAL: Develop a marketable, skilled workforce that meets employers' needs and attracts new employers.

OBJECTIVES:

- Assist the local workforce development with programs and initiatives
- Promote programs that offer workforce education and training
- Improve access to information relating to employment and career choices
- Increase marketable skills of the region's workforce

STRATEGY:

- Coordinate with agencies that provide workforce development
- Support local colleges in their endeavor of a better trained workforce
- Develop and implement programs that support entrepreneurs in establishing a successful business
- Work with agencies and colleges in development of programs to retrain our skilled workforce

INDUSTRIAL PARKS

GOAL: Recruit new industry and business to increase regional prosperity by being competitive and business friendly.

OBJECTIVES:

- Enhance our industrial parks through improvements

- Promote incentives for industry to choose to locate in our area
- Market the industrial parks in our region

STRATEGY:

- Plan and develop projects that improve our industrial parks
- Work with local and state officials in providing incentives for a business or industry to locate in our parks
- Market the industrial parks on websites, Facebook and advertisements
- Promote the region as a good place to live and work

EDUCATION

GOAL: Improve education achievement attainment.

OBJECTIVES:

- Support all local schools and boards
- Reduce high school drop-outs
- Increase the number of 4 year degree holders
- Increase the number of certificate holders from various skill trades

STRATEGY:

- Develop degree programs and curriculums close to home
- Work with colleges and universities in making higher education affordable
- Work with high schools and boards in developing programs aimed at reducing high school drop-out rates
- Promote education as a means of economic development

TRANSPORTATION

GOAL: Improve the Connectivity of the KRADD region through continued improvement of all transportation systems that will open opportunities within the region.

OBJECTIVES:

- To improve road access within the region, particularly into the more rural areas of the region, opening economic development opportunities outside the county seat areas.
- To develop transportation projects that will promote economic development

STRATEGY:

- Plan and construct transportation facility improvements in accordance with strategies to facilitate economic growth.

- Promote road projects that improve access to the interstate system in the more rural areas of the region.
- Investigate the best locations to create/improve connectivity between the various interstates through the more rural counties.

INFRASTRUCTURE

GOAL: Build the foundation for sustainable economic growth by providing adequate infrastructure for the entire KRADD region will facilitate the opportunity to expand and enhance target marketing efforts.

OBJECTIVES:

- To provide reliable, efficient and accessible infrastructure and public services to accommodate new development.
- To expand and upgrade water and wastewater facilities into the more rural areas of the region through partnerships with private and public utilities.
- To provide extend gas infrastructure into our industrial parks to make our parks more attractable to industry

STRATEGY:

- Encourage city/county capital improvement programs to coordinate public investment in infrastructure with economic development priorities.
- Encourage water/sewer system regionalization and promote cluster development to minimize infrastructure costs and ensure quality and sustainability
- Increase the availability of affordable water and sewer service throughout the region, pursuing state and federal grants and low-interest loans to expedite implementation of existing water/sewer facility plans
- Identify potential short-term growth areas within the region to prioritize infrastructure investment.

TOURISM

GOAL: Enhance the tourism opportunities throughout the KRADD region in economic development efforts.

OBJECTIVES:

- Strengthen relations with tourism boards throughout the region
- Promote the natural assets of our region
- Market our tourism
- Promote regional tourism
- Promote entrepreneurship in tourism
- Provide support for small business development and expansion

STRATEGY:

- Work with the tourism boards to develop relationships and promote tourism
- Advertise and promote what we already have
- Develop regional trails
- Work with agencies in developing and implementing programs aimed at entrepreneurship
- Develop small business incubators
- Develop and assist in funding tourism activities
- Support cultural heritage conservation measures and development

TECHNOLOGY

GOALS: Build a strong foundation of technology for economic growth.

OBJECTIVES:

- Encourage availability and use of broadband
- Have up-to-date technology available for first responders
- Establish a regional broadband committee
- Promote the Last Mile Project

STRATEGY:

- Hold public meetings to identify broadband needs
- Collaborate with first responders to meet their needs of the ever changing technological world
- Work with businesses and agencies in developing the last mile

ENVIRONMENT

GOAL: To provide a healthy sustainable environment.

OBJECTIVE:

- Reduce illegal trash dumps in the KRADD region
- Promote a clean environment
- Reduce straight pipes and failing septic systems
- Promote clean waters
- Promote recycling

STRATEGY:

- Continue annual clean up events to clean up illegal trash dumps, litter along our road ways and in our water ways
- Develop and assist funding of public sewer projects
- Promote preserving the beauty of our area
- Educate residents on the effects of pollution

STRATEGIC PROJECTS

Based on the goals and strategies reported in this document, KRADD reviewed the major capital improvement projects throughout the KRADD region. Projects have been ranked by priority in the region by the Kentucky Transportation Cabinet, Regional Transportation Council and Regional Water Management Council using the following criteria:

1. Regional Impact - projects were reviewed based on their overall impact to the region.
2. Purpose and Need - projects were also considered based on whether they meet an immediate need or deficiency. The Kentucky Infrastructure Authority, the Kentucky Transportation Cabinet and KRADD all provided some form of prioritization based on purpose and need.
3. Future Growth Potential - The committees also considered the potential impact for future economic development efforts. In this case, projects that offered the greatest short and long term growth potential in terms of new development received the greatest priority.

The projects were sub-divided into four project types: Wastewater Management, water service, transportation improvement and economic development projects. A list of past, present and future projects are in the following pages.

PAST AND PRESENT COMMUNITY DEVELOPMENT PROJECTS

COUNTY	ENTITY	PROJECT
Regional	Appalachian Industrial Authority	Appalachian Industrial Authority Speculative Building (\$800,577) – Construction of a 40,000 square foot speculative building in the Gateway Regional Business Park located in Jenkins, Letcher County. The project included \$640,000 of Economic Development Administration funding.
Regional	Appalachian Industrial Authority	Jenkins Industrial Park Water/Sewer –provision of water/sewer to the Jenkins Industrial Park, which is now a portion of the Gateway Regional Business Park. EDA investment of \$288,000, with a total project cost of \$845,321. The project has allowed for expansion of the city park into a regional park, representing four counties. There are currently 48 new employees in the park, with new clients looking at the location on a regular basis.
Regional	Appalachian Industrial Authority	Ferus Corporation –location of new industry in the Gateway Regional Business Park in Jenkins, KY. Company employs 30 people.
Regional	Appalachian Industrial Authority	Equitable Resources –location of new industry in the Gateway Regional Business Park in Jenkins, KY. Company currently employs 10 people.
Regional	Appalachian Industrial Authority	Taylor Metal Company – Construction of an expansion facility for the Taylor Metal Company. The new facility is located in the Gateway Regional Business Park in Letcher County and currently employs 13 people.
Regional	Appalachian Industrial Authority	B.J. Services, Inc. – Construction of a new gas well servicing facility in the Gateway Regional Business Park in Letcher County. The company is operational and currently employs 20 people.
Regional	Appalachian Industrial Authority	Drone Marketing Video Project – K-PEGG \$6,000 The project will produce a drone video used to market the Industrial Park.
Regional	Appalachian Industrial Authority	Gateway Industrial Park Build Ready Site: (AML) This project aims to construct a build ready padd to help future businesses move into the industrial park quicker.
Regional	Coal Fields Industrial Authority	Dajcor Aluminum – The project is funded through AML and local funds to renovate the American Woodmark facility and purchase the building and equipment for the Dajcor Aluminum plant. The project will employ 200 people with an anticipated opening date of March 2020.
Regional	Coal Fields Industrial Authority	Natural Gas Project: The project is funded through AML, KIA and EDA funds. The project will extend natural gas into the Coal Fields Industrial Park allowing for an expanded recruitment of industries to the park.
Regional	Coal Fields Industrial Authority	Intuit/Sykes: The \$3,562,352 project is funded by CDBG and ARC and will renovate the interior of the Sykes building. Sykes, Perry County Fiscal Court and Intuit have partnered to bring 200 to 300 jobs beginning operations by January 2020.
Regional	Coal Fields Industrial Authority	American Woodmark Corporation –Location of a new production plant in the Coal Fields Regional Business Park in Hazard, Perry County. The project involved the construction of a 220,000 square foot dimension lumber plant which employed 180 people.
Regional	Coal Fields Industrial Authority	MB Lumber Company –relocation of a furniture component factory to the Coal Fields Regional Business Park. The plant employed 15 people.
Regional	Coal Fields Industrial Authority	AODD Transport Relocation –Relocation of a trucking warehousing facility from Tennessee. The company is in the process of relocating

		their facility to the Coal Fields Regional Business Park in Hazard, Perry County. They own and operate 50 tractor/trailer trucks for which they hire drivers, as well as contract with private truck owners.
Regional	Coal Fields Industrial Authority	SYKES Inc. –re-opening of Sykes, Inc. in the Coal Fields Regional Business Park. The company now has 700 employees working 4 shifts
Regional	Coal Fields Industrial Authority	Maintenance & Landscaping Project – K-PEGG \$15,000 Project will do sign and landscaping improvements in the Industrial Park.
Regional	KRADD	Regional Brownfields Assessment Grant – Grant provides \$400,000 EPA funds to assess potential Brownfields sites throughout the KRADD region.
Regional	KRADD	Health Impact Project – PEW \$100,000 The project will allow a health impact study in the KRADD region.
Regional	KRADD	Regional Brownfields Assessment Grant: (\$300,000 Brownfields) The project is the 2 nd round of a Regional Grant to do Phase I and Phase II Environmental Assessments. Awarded \$300,000 October 1, 2020.
Regional	Knott County Fiscal Court	First Frontier Appalachian Trail Strategic Plan: Grant provides \$250,000 through an AML grant. The First Frontier Appalachian Trail Strategic Plan is a comprehensive plan that includes overseeing the trail development, trail maintenance, trail connectivity, marketing and employment strategies throughout the partnering 19-county region. The First Frontier Appalachian Trail Authority’s long-term goal is trail connectivity between the partnering 19 counties. Trail connectivity opens up new paths to grow our economy and the strategic plan will include specific, detailed steps in order to reach that goal.
Regional	Troublesome Creek Environmental Authority	Ball Creek Wastewater Treatment Plant and Collection Lines Project – Construction of a 100,000 GPO treatment plant with collection lines to service the Chestnut Mountain Development area. Total Project funding \$5,013,817 includes KY Infrastructure Clean Water State Revolving Loan (ARRA) \$1,500,000; State Funding \$3,013,817 and US Corp of Engineers Section 531 Grant \$500,000.
Regional	Troublesome Creek Environmental Authority	Ball Creek Wastewater collection system expansion - Project will expand the sanitary collection system to include Yellow Mountain Road located off of HWY 1098 and also an area along KY 80 from Soft Shell, KY at the intersection of KY 1098/1087 and KY 80 to the Jamestown Village Mobile Home Park and the Phoenix Place subdivision at the Knott and Perry County line. Funding for the project includes ARC, CDBG, USCOE Section 531, Coal Severance and Flood Control for a total project cost of \$2,684,850. Project is under construction and expected to be completed in November 2017.
Regional	Troublesome Creek Environmental Authority	Troublesome Creek Environmental Authority - Ball Creek/Hindman Sanitary Sewer Evaluation Study - Total Project Cost of \$150,000. A study to evaluate the potential of reducing partial flow of the Hindman System and rerouting it to the new Ball Creek Plant. Project is completed.
Regional	Troublesome Creek Environmental Authority	Troublesome Creek Environmental Authority -Ball Creek WWTP Improvements Project - Total Project Cost \$26,402. Project intends to improve the functionality of the plant. Substantially complete.
Regional	Troublesome Creek Environmental Authority	Drone Port Sewer Collection and Drone Port Water Project –Project will construct water and sewer service to the Drone Port in Knott County. AML Pilot in the amount of \$743,000 approved.
Regional	Troublesome Creek Environmental Authority	Highway 80 Sewer Collection Project Phase III - Project will construct sewer service to 159 households in Knott and Perry Counties.

Regional	Troublesome Creek Environmental Authority	Troublesome Creek Environmental Authority- Ball Creek Wastewater Lines Phase II – Total Project Cost \$2,684,850. Project will extend sewer collector lines to the Jamestown Mobile Home Park and Phoenix Place Development.
Regional	Troublesome Creek Environmental Authority	Drone Port Sewer Collection and Drone Port Water Project –Project will construct water and sewer service to the Drone Port in Knott County. Project to create 12 direct and 206 indirect jobs. AML Pilot in the amount of \$743,000 and an ARC in the amount of \$500,240 approved.
Regional	Troublesome Creek Environmental Authority	Highway 80 Sewer Collection Project Phase III - Project will construct sewer service to 5 subdivisions (159 households) and one roadway in Knott and Perry Counties. ARC in the amount of \$1,167,209 and a USCOE Section 531 in the amount of \$1,000,000 have been applied for.
Regional	Pine Ridge Industrial Authority	Feasibility Study – funded through a \$10,000 ARC Flexi Grant the project allows for a study to determine if camping sites are feasible in the Music Heritage Park. The study is complete.
Regional	Pine Ridge Industrial Authority	Music Heritage Park: The project will allow for the construction of a Music Heritage Park in the Pine Ridge Industrial Park in Wolfe County, Kentucky. Construction will include an outdoor amphitheater, an RV Park, camping, a country store and an indoor music theater.
Regional	KRADD	Community Kitchen Project: The project will allow for the renovation of the Old Dairy Building for the construction of a Community Kitchen.
Regional	Letcher County Water Commission	Regional WTP Project: The project will allow for the construction of a WTP in the Partridge community of Letcher County. The Letcher County Water Commission will produce water to sell to Letcher County Water District, the City of Benham and the City of Lynch.
Regional	KRADD	Brownfields Assessment Grant – EPA \$3,000,000 Project will allow for Phase I and Phase 2 Environmental Assessments in the historic City of Hazard
Breathitt	Breathitt County Industrial Authority	Breathitt County Industrial Authority Spec Building - Construction of a 41,000 square foot speculative building in the Panbowl Industrial Park. The park and building are owned and operated by the Breathitt County Industrial Authority and located in Jackson, Breathitt County. The financing for the facility included a \$700,000 EDA grant as well as \$300,000 in Local Government Economic Development Funds.
Breathitt	City of Jackson	City of Jackson Sewer Extension –Extension of sewer service along KY 15 to the Kentucky River Community Care complex. The project allowed for 44 new employees at the facility. Funding for the project included a \$250,000 EDA grant.
Breathitt	City of Jackson	City of Jackson - Wal-Mart Area Sewer Project – Total Project Cost of \$510,000. Project will collect sewer from future development. Currently seeking funding.
Breathitt	City of Jackson	Indoor/UAV Project: Homeland Security Grant
Breathitt	City of Jackson	Jackson Wastewater Lift Station Rehabilitation Project - This project will rehabilitate 13 lift stations throughout the city's system that constantly have to be repaired due to age. The lift stations included are: Full Gospel Deliverance Church LS, Millers Trailer Court LS, Jackson Lions Club LS, Carl Combs (Quicksand) LS, LS located at 255 Quicksand Road, Bridge Hollow LS (four in total), South Jackson LS, Jackson Village LS, LBJ Elementary School LS, and the Lakeside Drive LS. Three of the lift stations are in the direct flow of the water treatment plants intake system. The project also includes 2,200 LF of 8" Gravity line in Bridge Hollow to replace existing lines that are currently force main to reduce maintenance issues. Funding for the project included \$500,000 ARC grant and a \$700,000 Clean Water State Revolving Loan Fund from KIA.

Breathitt	City of Jackson	Jackson Lift Station Rehabilitation Project Phase II - This project will rehabilitate 12 sewer lift/grinder stations within the city's system that are in frequent need of repair due to age. The lift stations to be rehabilitated are: Breathitt High School (high School), Eastern KY Juvenile Home (Boot Camp), Juvenile Detention Center (Detention Center), Wolverine, Douthitt Park, Bridge Hollow (4 grinder stations), Archie Combs (Combs), Bailey Center, and the influent lift station at the WWTP. Funding includes a \$593,000 Clean Water State Revolving Loan Fund and a \$580,000 grant from ARC.
Breathitt	City of Jackson	Lakeside Drive Water & Sewer Extensions Project - The Lakeside Drive project will focus on both the water and sewer. The water will extend approximately 4,900 linear feet of 8" PVC water line, two flush hydrants, one air release valve, and one 300,000 gallon ground storage tank with telemetry. The sewer will install approximately 4,600 linear feet of 4" PVC force main, 1,600 linear feet of 8" PVC gravity, six manholes and two 80 GPM lift stations. The project will improve safety and add an isolation zone, alleviate pressure issues, and increase storage. It will also provide adequate wastewater removal services to an area that currently relies on individual septic systems. The project will allow for economic development in the specified area as there are several businesses planning to build once construction is complete. Applications have been approved by EDA in the amount of \$1,156,419 and ARC in the amount \$300,000.
Breathitt	City of Jackson	City of Jackson Water Plant Construction project - Construction of a new water plant to serve the City of Jackson and surrounding areas. This \$6,610,777 project, which utilized \$1,500,000 in EDA funding, has allowed for a total of 175 jobs, including new and retained, in the area. Project Complete.
Breathitt	City of Jackson	City of Jackson – Medical Center Waterline Improvement/Jett Drive Project – Project was funded by a KLC loan to improve service to 40 residents.
Breathitt	City of Jackson	City of Jackson – Quicksand Tank Dedicated Water Line Project – AML funded water project to improve service to 288 customers of Jackson and to improve service to the Breathitt Water District.
Breathitt	City of Jackson	City of Jackson – Water Treatment Plant Repairs Project – Project replaced high service pumps and other equipment at the plant with funds from USDA.
Breathitt	City of Jackson	City of Jackson – HWY 15 Water Improvement Project – Project installed new line around Wal-Mart to improve water pressure to the area.
Breathitt	City of Jackson	City of Jackson Splash Park – Project constructed a Splash Park at Douthitt Park utilizing Land and Water Conservation Funds and Private Donations and City Funds.
Breathitt	City of Jackson	City of Jackson – Jackson Waterline Replacement Project Phase I - (\$1,000,000 ARC and \$1,000,000 CDBG) This project will replace the existing aging lines in the downtown area with new 2", 4", 6", 8" and 10" PVC lines. This will assist the City in reducing high water loss that they are currently experiencing due to water line breaks. The current infrastructure located in the downtown area was installed in the early 1900's and has exceeded its useful life. Replacing these lines and reducing line breaks will also reduce stress on the water treatment plant. The project will begin at the Highland water tank and proceed towards the center of downtown. The project will encompass all of what is considered

		the downtown area which includes the following streets: Main Street, Highland Avenue, Hurst LN, Patton Avenue, Bobcat Ln, Quicksand Rd, Jefferson Avenue, Cherry Street, River Street, Sycamore Street, Hawk Street, Broadway, Elm Street, Court Street, Hargis Lane, Ison Street, Washington Avenue, Short Street, Smith Lane, Hogg Street, Warrix Drive, Bays Street, Kentucky Avenue and Lincoln Avenue as funding allows.
Breathitt	City of Jackson	City of Jackson – Jackson Sewer Rehabilitation Project – Project will rehab existing sewer lines in the City of Jackson sewer system. An SRF has been applied for in the amount of \$1,017,000.
Breathitt	City of Jackson	Jackson Water Treatment Plant Upgrade - Modify and upgrade the raw water screening and sand removal systems to better handle periodic heavy loads of leaves and sand during periods of high flow in the North Fork of the Kentucky River. Upgrade the existing plant to better remove raw water turbidity during periods of high river flow. Modify the ACTIFLO treatment system, which is one of the manufacturer's early designs, for better performance. Upgrade and renovate filter controls, filter valves, and chemical feed systems. Replace the obsolete SCADA and telemetry systems in the plant. The plant capacity will remain unchanged at 2.5 MGD. Total project cost is expected to be \$1,994,812 and ARC has been submitted.
Breathitt	City of Jackson	Extrication Equipment: \$36,625 USDA Grant to purchase Extrication Equipment for the Fire Department.
Breathitt	City of Jackson	Jackson Emergency Services Building - The City of Jackson is proposing to renovate the fire station located on Broadway and subsequently convert it into an emergency services building for both fire and police departments. The facility is under-utilized by the Jackson Fire Department as it is a secondary fire house and is mainly used to store equipment and vehicles. The Jackson Police Department is currently located at City Hall. The location at City Hall does not have adequate space for the police department's needs. Total Project cost is \$636,453. An ARC pre-app \$500,000 and USDA RD loan/grant have been applied for.
Breathitt	City of Jackson	Downtown improvement Project – Will renovate the downtown area including storm sewers, sidewalks, street lighting, paving, landscaping, railings and demo existing buildings that are in disrepair. Total project cost is \$750,000. An ARC is expected to be applied for.
Breathitt	City of Jackson	Douthitt Park Concession Stand Project - This project will see the construction of a two-story concession stand/press box at Douthitt Park in Jackson, KY. Total Project is \$50,000. A LWCF has been applied for in the amount of \$25,000.
Breathitt	City of Jackson	Douthitt Park Ball Court Resurfacing Project: (LWCF: \$25,000)
Breathitt	City of Jackson	Jackson Rescue Boat - The City of Jackson is seeking \$17,428.47 from USDA RD for the purchase a rescue boat for the fire department. The total project cost is \$23,237.96. The fire department will purchase the 14 foot aluminum boat with rescue pump jet and gear case.
Breathitt	City of Jackson	Jackson ATV Purchase project - The City of Jackson is seeking \$22,859.13 from USDA RD for the purchase of an ATV. The total project cost is \$30,478.84. The equipment, a Polaris Ranger XP, will be used by the Jackson Fire Department, along with the county, when needed to rescue and transport patients in situations where the terrain is inaccessible by emergency vehicles.
Breathitt	City of Jackson	Jackson Emergency Vehicles Project - The City of Jackson is seeking \$47,889.43 from USDA RD for the purchase of two emergency vehicles for the police department. The total project cost is \$63,852.58. The police

		department will purchase two dodge chargers with standard police equipment and will include necessary accessories.
Breathitt	City of Jackson	Jackson SCBA/RIT Project – (\$50,000 USDA RD) The project is for the purchase of new SCBA and RIT SCBA gear. The total project cost is \$74,300. The equipment, ten MSA G1 SCBA, will be replacing SCBA gear that has aged past their useful life. Additionally, one RIT SCBA will be purchased for the Fire Department. Currently, the Jackson Fire Department does not own a RIT SCBA which is used to rescue downed fireman.
Breathitt	City of Jackson	Fire Department Various Equipment: The City of Jackson is seeking \$27,013.62 for the purchase of various equipment for the fire department. The total project cost is \$36,018.16. The equipment, a computer for reports and training records, rope rescue equipment and miscellaneous firefighting equipment needed by the fire department. The Jackson fire department will be utilizing this equipment to ensure residents safety in the City and on County assisted calls.
Breathitt	City of Jackson	Cops Hire Grant: Staff at the schools has witnessed characteristics of sexual abuse and the officers have also been to homes where the sexual abuse has been present. It is the hope of the department that with the SRO present students will be more likely to report this type of abuse. The SRO will have a strong presence at the school and will be both mentor to students and also serve as a prevention tool
Breathitt	City of Jackson	Parks & Recreations Tractor and Backhoe Project:
Breathitt	City of Jackson	Rejuvenate Jackson Phase I: (AML in Process) The Rejuvenate Jackson is a multi-phase project to redevelop the downtown area of Jackson to create opportunities for economic development, support tourism, and revitalize the community. The project will add handicap ramps to the area and revamp the hard to use sidewalks so that visitors can easily access the businesses located along the street. The addition of landscaping and seating will make the area inviting to both young and old and will create an inviting downtown atmosphere. It will also attract business to the area for the shops that are currently vacant by improving the overall appearance of the area and making it a place people want to be. Parking will not be lost as there is a city-owned three story parking garage located directly behind the Jackson Deposit Bank.
Breathitt	City of Jackson	Utility Vehicle RD: The City of Jackson is seeking \$35,368.50 for the purchase of a utility truck. The total project cost is \$47,158.00. The equipment is a 2021 Chevrolet Silverado 3500 truck. The City will utilize the new vehicle to maintain the water lines, sewer lines and appurtenances throughout the city.
Breathitt	Breathitt County Fiscal Court	South Fork Elk View Waterline Ph 1 - Project will construct a waterline to the Elk Viewing area located on HWY 1098 (South Fork). The area is currently being developed for ATV Trail rides and camping and possible cabins/houses. The project will construct a 6" line to the area and will include 3 service meters, approximately 5 flushing hydrants, 16 gate valves, 4 combination air relief valves, a 40,000 gallon water tank, a 20,000 gallon water tank and a pump station. Telemetry will also be included for the tanks and pump station. Completion of this project will allow service to the state of the art Expo Center complete with horse trails as well as the Elkview Station, the campground with primitive camping, RV hook-up and cabin rentals available and will also allow for a trail-head connection to the Dawkins Trail at Evanston. There is also opportunity for OHV enjoyment in the area. At present, one OHV trail that is approximately 35 miles long has been completed. The County has

		currently been approved through the Recreational Trails Program funding to complete another phase of OHV trails. There are also subsequent OHV trail phases planned. The OHV trails will eventually connect with Perry, Knott and Magoffin Counties creating one of the largest trail systems on the east coast. Economic Development of this area cannot successfully occur though without first having safe, reliable drinking water in the area. The campground is also an essential part of the development of this area as riders will need a place nearby to lodge. Funded for this phase was awarded by AML in the amount of \$1,950,000.
Breathitt	Breathitt County Fiscal Court	Panbowl Fishing Pier Project - Project will construct a new fishing pier to replace the existing fishing pier. LWCF \$12,526 Local \$12,527
Breathitt	Breathitt County Fiscal Court	Breathitt County Fiscal Court – Malone Miller Memorial Skate Park – Skate Park constructed at Douthitt Park utilizing Land and Water Conservation Funds and Coal Severance.
Breathitt	Breathitt County Fiscal Court	South Fork Elk View Campground Phase Two – Phase two will focus on improving the area for economic development. Current plans include developing the campground area to include 20 tent sites and 24 full RV hook up sites. This will include grading, gravel roads, camping pads, on-site electric, water and sewer, minor landscaping, a small playground area, RV sewer dump station holding tank, septic system, bath house and fencing. Plans also include 11 cabins furnished with 2 bedrooms and 1 bath. The Fiscal Court has applied for \$500,000 from ARC and has been approved for \$1,345,000 from AML Pilot funds.
Breathitt	Breathitt County Fiscal Court	South Fork Elk View Phase III – Submitted an application to ARC for phase III of project to construct a visitor center. Total Project cost is \$708,500 and has been approved from ARC.
Breathitt	Breathitt County Fiscal Court	South Fork Elk View Phase IV – VII – Working with the Fiscal Court to develop the remaining phases of the project and apply for funding. These include an expo center, package plant, additional cabins and an event barn.
Breathitt	Breathitt County Fiscal Court	Breathitt County DES Vehicle - The Breathitt County Fiscal Court has been awarded \$35,739 from USDA RD, for the purchase of a DES Vehicle. The total project cost is \$47,653. The vehicle, a 2020 Ford F150 4WD XL Crew Cab 145" WB, will be purchased for use by the Department of Emergency Management.
Breathitt	Breathitt County Fiscal Court	Jailer Transport Van: The \$48,500 RD Community Facilities Grant will be used to purchase a van to transport inmates.
Breathitt	Breathitt County Fiscal Court	South Fork Elk View Development Project – Project will construct a 30,000 gallon WWTP and a 40,500 Expo Center at Elk View. Total project cost is \$6,888,314.64.
Breathitt	Breathitt County Fiscal Court	Elk view Master Plan – (\$120,000 ARC pre-app) Project will provide for a marketing study, geotechnical investigation, photogrammetric aerial mapping, survey control, site civil master plan and architectural building renderings for the Elk View area.
Breathitt	Breathitt County Fiscal Court	South Fork Elk View Wastewater Treatment Plant – Project will construct a 30,000 gallon WWTP and approximately 3,000 Linear Feet (LF) of 8" gravity sanitary sewer PVC line constructed and 12 4" sanitary sewer manholes installed. There will also be a lift station constructed inside of the WWTP at Elk View. The project will create approximately 2 jobs at the initial startup. A \$1,000,600 ARC grant has been applied for.
Breathitt	Breathitt County Fiscal Court	Breathitt County Tractor with Side Mower – Applying through USDA RD for a \$50,000 grant for an air ride seat tractor with a with a mid-mount side rotary mower. Total project cost is 98,685.60.

Breathitt	Breathitt County Fiscal Court	Breathitt County Courthouse Project – the Fiscal court is seeking funds to construct a new courthouse. The project is expected to cost \$6,450,000.
Breathitt	Breathitt County Fiscal Court	Elk View Marketing Strategy – The Fiscal Court is seeking funds to develop a website, logo, install cameras and develop brochures for the Elk view area. The estimated cost is \$15,000. An arc flex-e grant has been applied submitted for \$7,500.
Breathitt	Breathitt County Fiscal Court	Breathitt Sheriff's Vehicles - (\$46,700 USDA RD) The project was for the purchase of two police vehicles for the Sheriff's office. Total project cost is \$62,292.
Breathitt	Breathitt County Fiscal Court	Rousseau VFD Construction Project – (\$171,789 USDA RD and \$57,263 Applicant) This project will assist in construction a new volunteer fire department for the Rousseau VFD, so they will be able to stay in operation.
Breathitt	Breathitt County Fiscal Court	Various Medical Supplies Project: Homeland Security grant was submitted in April of 2021
Breathitt	Breathitt County Fiscal Court	Breathitt County Fiscal Court CDBG-CV: This project aims to help those who have become delinquent in utility payments as a result of the Covid 19 Pandemic
Breathitt	Breathitt County Fiscal Court	Rescue Boat & Swift Water Rescue Equipment: Breathitt County Fiscal Court is seeking \$33,575.28 for the purchase of a rescue boat and swift water rescue equipment. The total project cost is \$ 44,767.04. The Breathitt County Fiscal Court will use this equipment to loan out to various fire departments across Breathitt County in the events of major flooding or flash flooding
Breathitt	Breathitt County Fiscal Court	Breathitt County Fiscal Court CDBG-CV: (CDBG-CV: \$200,000) This project aims to assist those who have become delinquent on their utility payments as a result of the Covid 19 Pandemic.
Breathitt	Breathitt County Water District	Hwy 2436 Airport Road Water Line Extension – The project will extend new water service funded through ARC \$215,000 and local match \$75,000.
Breathitt	Breathitt County Water District	Breathitt Waterline Extensions Project Phase 1 – The project will extend new water service to Warshoal Road, Robinson Fork, Old Bailey Road and Rode Fork Road serving a total of 30 households. The project will also update telemetry in the system. An ARC application was approved for \$750,000
Breathitt	Breathitt County Water District	Breathitt County Water District - South Fork, Canoe and Houston Water Line Extensions Project - Total Project Cost of \$4,233,000. Project will extend water lines to the South Fork area, Canoe area, Houston area, Cecil Clair property, and will rehab two pump stations. Project is complete.
Breathitt	Breathitt County Water District	Breathitt County Water District - KY 205 Water Line Extensions – Total Project Cost \$186,435. Project extended service to 15 households in the area. Project is complete.
Breathitt	Breathitt County Water District	Breathitt County Water District-Roark Branch Water Line Extensions -Total Project Cost \$107,203. Project will extend service to 10 households in the area. Project is complete.
Breathitt	Breathitt County Water District	Breathitt County Water District-Bethany Road Water Line Extension -Total Project Cost \$200,000. Project extended water service to 15 households. Project is complete.
Breathitt	Breathitt County Water District	Breathitt County Water District – KY 1110/KY 28 Water Line Interconnection – Total Project Cost \$930,000. Project will provide a permanent interconnection between the Water District and the Village of

		Buckhorn . Project will also improve service to 50 households in the area. Project is complete.
Breathitt	Breathitt County Water District	Breathitt County Water District Breathitt and Perry County Waterline Interconnection- Total Project Cost of \$1,220,000. This project will include water lines to serve KY 315 and KY 28 from Turner's Creek South to Perry County. It will also provide a connection to the Buckhorn water system to provide a reliable supplemental supply into Perry County.
Breathitt	Breathitt County Water District	Breathitt County Water District – Project provided service to 7 households
Breathitt	Breathitt County Water District	Breathitt County Water District – River Caney Water Line Extensions – AML funded water project to 84 households.
Breathitt	Breathitt County Water District	Breathitt County Water District – Hardshell – Caney Extensions – Project was funded by AML to serve 154 customers
Breathitt	Breathitt County Water District	Breathitt County Water District – HWY 205 Extensions – Project was funded by Coal Severance to serve 210 households
Breathitt	Breathitt County Water District	Breathitt County Water District – KY 1812 Panbowl Water Line Extension – AML funded water project to 76 households.
Breathitt	Breathitt County Water District	Breathitt Waterline Extensions Ph 2 Project – (\$750,000 ARC) The project will extend new water service to Creekside Road, War Creek RD, Joe Ward Fork and Mann Road serving a total of 28 households. The project will also perform some system rehab.
Breathitt	Breathitt County Water District	Breathitt County HWY 30 East and KY 542 Lambric Waterline Extensions - Waterline extension starting near the Rousseau Elementary School and extending to the county line on KY 30 East, all of KY 542 and along Quicksand Creek RD. Project will provide water service to 210 households. It includes approximately 150,280 LF of 6" PVC water line and 19,400 LF of 4" PVC line. The project also includes one 200,000 gallon water storage tank and one 400 gpm pump station. Creek crossing will be done by directional drill. Total project cost is \$4,999,000. An AML application was submitted.
Breathitt	Breathitt County Water District	Breathitt Waterline Extension Phase 3 Project – (\$750,000 ARC) The project will provide service to three areas in the county. The roads to be serviced will be Puncheon Creek, Johnson Fork, and Highland Road. The project will include SCADA site upgrades and tank site repairs to the KY 28 tank, Cane Creek tank, 30 West tank, and 30 East tank.
Breathitt	Breathitt County Water District	Utility Vehicle: The Breathitt County Water District is seeking \$39,866.25 for the purchase of a utility vehicle. The total project cost is \$53,155.00. The equipment is a 2021 Chevrolet 1500 truck. The Water District will utilize the new vehicle to maintain the waterline and appurtenances throughout the county.
Breathitt	Wolfcoal Volunteer Fire Department	Turnout Gear – (\$13,420 RD) New turnout gear for the fire department.
Breathitt	Breathitt County Museum	Breathitt County Arts and Tourism Center: (\$392,700 ARC) The Museum Board will renovate the old WPA jail to be the new museum and arts center to include a welcome center and possible cafe.
Breathitt	Breathitt County Schools	Sustainable Agriculture Facility – (\$92,000 USDA RD and \$30,963 Local) Purchase of an agricultural container for the high school.
Breathitt	Jackson Bio-Energy	Jackson BioEnergy High-Tech Conversion Project - This project will construct a 7,500 square foot facility that will utilize 3 patents developed by UofL Professor Jagannadh Satyavolu to produce xyclose, activated carbon, and bicoal. 35 jobs will be created.

Breathitt	Pure Farms Kentucky	Pure Farms Kentucky Hydroponics – (\$3,000,000 AML Pilot) Creation of a hydroponics farm in Breathitt County that would service the region.
Knott	Knott County Water & Sewer District	Knott County Water & Sewer District – Logan Gap Master Meter Replacement Project – Total Project Cost \$5,874. Project will replace the existing master meter that services the interconnection to Letcher County Water & Sewer District. Project is complete.
Knott	Knott County Water & Sewer District	Knott County Water & Sewer District – Vance Mountain RD Service Line Project – Total Project Cost \$15,352. Project will construct a service line to 4 households. Project is complete.
Knott	Knott County Water & Sewer District	Knott County Water & Sewer District - Pippa Passes WWTP Improvements Project - Total Project Cost \$27,023. Project will make improvements to the plant. Project is complete.
Knott	City of Hindman	Sewer Rehab and WWTP Rehabilitation Project: \$2,000,000 ARC The project will rehab the existing WWTP and conduct a SSES Survey and replace problematic sewer lines in the system.
Knott	City of Hindman	Waterline Extension Project – (ARC \$615,500, CDBG \$600,000, Local \$15,500) Project will extend new water service to 106 residents. ARC pre-application submitted for \$615,000. A CDBG application will be submitted for the balance. A total project cost of \$1,231,000.
Knott	City of Hindman	Hindman Sewer Rehabilitation Project – ARC \$500,000, Section 531 \$550,000 and RD \$150,000
Knott	City of Hindman	KRCC Waterline project Knott county (project estimated at \$497,600.00; funding being developed)
Knott	City of Hindman	Waterline Extension Phase II: The City will apply for funds at an approximate project cost of \$1,500,000.
Knott	Knott County Fiscal Court	Troublesome Creek Stringed Instruments Company and Quiltmaker Inn Project – AML Pilot submitted for \$5,600,000 for the \$7,100,000 Project cost – will serve 53,880 clients and create 40 jobs.
Knott	Knott County Fiscal Court	Knott County Campground Project – AML Pilot application submitted for \$700,000. Project will serve 3,000 clients and create 12 jobs.
Knott	Knott County Fiscal Court	Garner MT Pump Station replacement Project - This project will supply water to the Garner Mountain area of Knott County. This project will replace the Garner pump station and will include a backup generator and SCADA. It will also include the addition of a pressure reducing and bypass valve at Jones Fork. The project also includes 2,000 LF of 6" PVC to interconnect from Watts Fork to 550 and Master Meter and vault and one hydrant. Knott County Fiscal Court will turn over to either Hindman or KCWSD upon completion. An ARC application has been submitted for \$503,700.
Knott	Knott County Fiscal Court	Mine Made Adventure Phase II – Project will finish the campground at the site. Will install additional RV sites, complete additional cabins, pave the road, supply utilities and provide for grading, drainage and geotextile fabric. Total project cost is \$1,000,000. Will apply for ARC.
Knott	Knott County Fiscal Court	KCWSD Back-up generators – The project will install two generators at the WTP and intake. Total project cost is \$494,100. An AML pilot and a FEMA application have both been submitted for this project.
Knott	Knott County Fiscal Court	Drone Port Plan - The project will develop a plan to allow the Drone Port to provide outreach, marketing, and education in the most cost efficient manner. An ARC for \$275,000 has been submitted.
Knott	Knott County Fiscal Court	Knott County Fiscal Court CDBG-CV: The CEBG-CV grant aims to help those who have become delinquent in utility payments as a result of the Covid 19 pandemic

Knott	Knott County Fiscal Court	Mide Made Adventures Lodge: (AML) The Knott County Fiscal Court seeks to develop the county-owned park, Mine Made Adventures, formerly known as the Knott County Mine Made Adventure Park and Campground, that includes infrastructure installation and expansion and construction of additional campground sites, cabins, and a multi-purpose building. Mine Made Adventures is located on 255 acres of the 40,000 acre park with 150 miles of multi-use trails on a re-claimed mountain top in Knott County. The project will increase the county's capacity for attracting day and overnight visitors, expand tourism potential, offer enhanced business and entrepreneurship opportunities, create jobs, provide new streams of revenue for the county, and establish Knott County as a tourism destination
Knott	Knott County Water & Sewer District	Carr Creek Water Treatment Plant Expansion Project Knott Co. (Multi County LGEDF \$2,000,000; KIA HB1 \$250,000) Project complete.
Knott	Knott County Water & Sewer District	Carr Creek Water Treatment Plant – Construction of a 2,000,000 gpd water treatment plant. Total project funding of \$10,920,365 includes USDA of \$3,519,860; CDBG \$2,000,000; ARC \$500,000; EPA \$1,900,500; State funding \$3,000,000. The project is complete at this time.
Knott	Knott County Water & Sewer District	Dry Creek Water Line project Knott Co. (AML\$1,000,000, HB1 \$825,000)
Knott	Knott County Water & Sewer District	Carr Creek Phase III Waterline Project Knott Co. (USDA RD \$500,000 ARC \$400,000, HB1 \$1,025,000)
Knott	Knott County Water & Sewer District	Homeland Security Grant - \$256,357 to purchase 2 generators
Knott	Knott County Water & Sewer District	Emergency Vehicle Purchase – Project will allow for the purchase of three emergency vehicles. Funding Applied for Community Facilities \$32,160 and Local \$59,726.
Knott	Knott County Water & Sewer District	Waterline Extensions (Last Mile) and WTP Improvement Project - The proposed project will include service for 95 new customers located in numerous areas of Knott County. The project will finish up service to the remaining non-served households in KCWSD's Knott County service area – hence the last mile project. The project will include approximately 43,380 LF of waterline which includes 10,150 LF of 2", 22,930 LF of 3" and 10,300 LF of 4" all proposed as SR-17 PVC waterline. There will be numerous appurtenances included with the project – control valves, flush hydrates, service meters, booster pump station (BPS) and horizontal directional drilling (HDD) with HDPE pipe (3" and 4") bores. There will be one BPS required to service several homes in the upper headwaters of Deadman Branch. The project will also include replacement of the sludge dewatering equipment at the Carr Creek Lake Water Treatment Plant (WTP). Total project cost is \$1,496,330. An ARC in the amount \$1,197,064 has been applied remaining funds are from local and coal severance.
Knott	Knott County Water & Sewer District	Water Treatment Plant(WTP) Back-up Generator Project
Knott	City of Pippa Passes	Pippa Passes WWTP Replacement and Line Rehab Project
Lee	City of Beattyville	Vehicle Purchase Project: The project will purchase 2 vehicles for the water department at a cost of \$90,000 funded through local and RD Community Facilities Grant.
Lee	City of Beattyville	Sewer Line and Lift Station Improvements - \$259,700 ARC Economic Development Grant to rehab the sewer line and lift station to serve the Lee County Adjustment Center.
Lee	City of Beattyville	Emergency Vehicle Purchase Project – Community Facilities \$27,353 and Local \$9,118. The project will purchase a new emergency vehicle.

Lee	City of Beattyville	Beattyville Town Square and Farmers Market – (\$1,285,000 AML Pilot) Project will construct a covered shelter, farmers market stands and stage for concerts and outdoor theatre productions.
Lee	City of Beattyville	Old City Hall Brownsfield Clean-up Grant
Lee	City of Beattyville	Beattyville Sewer Rehab Project - (\$1,000,000 ARC) The project will reduce inflow and Infiltration within the waste water system, provide for reliable sewer services to businesses and residents, extend the operating life of the sewer system, reduce costs to the City, and improve energy efficiency.
Lee	City of Beattyville	Beattyville Air System Project -The City of Beattyville is seeking \$35,112 from USDA RD for the purchase an Air System for the fire department. The total project cost is \$46,816. The City plans to purchase a Bauer Verticus Plus 6000 psi 9.7cfm charging rate that includes a two position NFPA compliant fill station – control panel – two DOT storage cylinders – automatic condensate drain system and PLC controller.
Lee	City of Beattyville	Beattyville WPA Old City Hall renovation project - The renovation will construct seven spaces or rooms on the first floor and six spaces on the second floor. The second floor will be utilized by the City of Beattyville as a Bed and Breakfast. The first floor will house an office for the City's Main Street Manager and Economic Development Director. A second space on the first floor will be used as a Welcome Center that will be run by the Backroads of Appalachia non-profit organization. This Welcome Center will also serve as Backroads of Appalachia's center of operations. The remaining rooms and spaces on the first floor will be leased out to local artisans and crafters or other local businesses for pop-up shops. An AML and ARC, both in the amount of \$1,226,700 has been applied for.
Lee	City of Beattyville	Beattyville Excavator Project - The City of Beattyville is seeking \$42,900 from USDA RD for the purchase an excavator with a trailer. The total project cost is \$52,100. The City plans to purchase a Kubota KX040-4R3T and a Gatormade 16+2 Trailer.
Lee	City of Beattyville	Castlewood MFG Project – (\$5,000,000 AML Pilot) Will purchase a building for the habitation of Castlewood Manuf. City will own and lease. Project would construct a new facility for Castlewood MFG facility to locate a secondary facility in Kentucky.
Lee	City of Beattyville	Carlisle Avenue Road repairs – The City is applying for FEMA funds to repair slippage on Carlisle Avenue. Total project cost is \$195,180.
Lee	City of Beattyville	Beattyville Connect Project: (AML)
Lee	Lee County Fiscal Court	Crystal Creek Subdivision: The project will construct infrastructure and construction of 7 homes. The CDBG grant will be applied for in early 2020 for a total of \$322,200. The project will be matched with HOME funds.
Lee	Lee County Fiscal Court	Roof Replacement on Beattyville/Lee County Fire Department – funded through \$283,206 CDBG and \$23,100 local match the project will replace the existing roof on the fire department.
Lee	Lee County Fiscal Court	St. Helens Park Improvements Project – LWCF \$26,675 Local \$29,552 The project will construct a walking trail and add additional playground equipment to the St. Helen's Park in Lee County
Lee	Lee County Fiscal Court	Three Forks Artisan Center

Lee	Lee County Fiscal Court	Power Cots and Heart Monitors – (\$50,000 USDA and \$36,057.88 LCFC) Purchase power cots and heart monitors for Lee County Ambulance Service
Lee	Lee County Fiscal Court	Lee County Housing and Retail Economic Development Project: (ARC Power, AML, CDBG: Project expected total \$7,465,120) The goal of Lee County Fiscal Court is to purchase and renovate the former Beattyville Elementary into a multi-use facility which includes high end living quarters along with additional retail space. The Fiscal Court along with its partners, The City of Beattyville and Kentucky River Area Development District, have created a plan to strengthen the local economy while focusing on growing Lee County as a regional tourist attraction. They will use the former Beattyville Elementary school located on HWY 11, Beattyville KY, 41311 in order to provide more opportunity to the area.
Lee	Lee County Fiscal Court	Lions Apparel Phase II: (CDBG) This project will bring equipment needed for Lions Apparel to reopen their Lee County location and bring 25 new jobs to the area with opportunity for further employment.
Lee	Lee County Fiscal Court	Lee County Fiscal Court CDBG-CV: (CDBG-CV: \$200,000) This project aims to assist those who have become delinquent on their utility payments as a result of the Covid 19 Pandemic.
Lee	Lee County Fiscal Court	Leeco Campground Project: (AML)
Lee	Lee County Fiscal Court	Little League and Recreation Park Project: (LWCF)
Lee	Lee County Fiscal Court	Lee County Sheriff's Taser Purchase Project:
Lee	Lee County Fiscal Court	Lee County Sheriff's Vehicle Purchase: (CF)
Leslie	City of Hyden	City of Hyden Community Wellness Center Project- Estimated Project Cost of \$6,000,000. Still looking for funding.
Leslie	City of Hyden	City of Hyden Park Equipment Project- Estimated Project Cost of \$49,280. The project will add 7 pieces of playground equipment to the City of Hyden Park. Project Complete
Leslie	City of Hyden	Hyden Safe Routes to School Project – Funded through a KYTC TAP Grant of \$200,000 the project will extend new sidewalks and replace existing sidewalks in Hyden. Project is still in design phase.
Leslie	Leslie County Fiscal Court	Fiber Board Project – Working with the Fiber Board to develop teleworks projects with community centers and other buildings in Leslie County.
Leslie	Leslie County Fiscal Court	911 Building Generator Project – Project will install a new generator at the 911 building. Total project cost is \$41,699.67. A FEMA application has been submitted.
Leslie	Leslie County Fiscal Court	Leeco Park Project – the County intends to apply for LWCF for this project – preliminary planning has begun for the project.
Leslie	Leslie County Fiscal Court	Leeco Campground Project: The Leeco Campground Project is the second and third phase of an existing project, The Leslie County Recreational Facility, for the area. Phase one, the Leslie County Little League and Recreation Park, has been submitted for a Land and Water Conservation Fund (LWCF) grant but not yet approved. Once completed, this project will include the construction of an entertainment pavilion and a camping complex. This is part of a multi-phase project the Leslie County Fiscal Court hopes will bring renewed attention to the area which in turn will boost the economy. There will be jobs created to operate the campground and entertainment pavilion with this project.
Leslie	Leslie County Fiscal Court	Police Cruiser Purchase Project – (\$77,809 USDA CF) This project will purchase two police cruisers for the Leslie County Sheriff's office.

Leslie	Leslie County Fiscal Court	School Violence Prevention Project:
Leslie	Leslie County Fiscal Court	Leslie County 911 Center Roof Renovation: The Leslie County Fiscal Court is seeking \$12,100.00, of a total of \$22,000 for the purchase of a new roof for the 911 center building. The new roof will replace the current shingle roof that is leaking and upgrade to a commercial grade metal roof.
Leslie	Leslie County Fiscal Court	Leslie County Connectivity Project: This project will provide new telecommunications and internet service to the county seat of Hyden and other areas of Leslie County in order to assist with improving economic development and disabling educational disparities both due in large part to inadequate or non-existent telecommunication services.
Leslie	Leslie County Water District	Backhoe Loader: The Hyden-Leslie County Water District is seeking \$50,000.00 for the purchase of a backhoe loader. The total project cost is \$119,991.00. The equipment is a Caterpillar 420 backhoe with single till loader. The Water District will utilize the backhoe to respond to maintenance calls both preventative and emergency, responding to waterline breaks and repairs, and to install any line that it can.
Leslie	Leslie County Water District	Leslie Waterline Extensions Phase I: This project would consist of adding potable water in areas including 8.25 miles of 3" line and would serve approximately 57 households.
Leslie	Leslie County Water District	Leslie Waterline Replacement Phase I: The project will replace approximately 12 miles of waterlines that experience reoccurring failures. This project will also include the replacement of 2 Booster Pump Stations, 5 Booster Pump Stations that will be rehabilitated with VFD's and also new construction of 10 zone master meters to improve water loss.
Leslie	Leslie County Water District	Utility Vehicle Purchase: The Hyden-Leslie County Water District is seeking \$30,445.80, for the purchase of two Utility Vehicles. The total project cost is \$55,356. The vehicles, two 2021 Dodge Ram 1500 trucks, will be purchased for use by the Hyden-Leslie County Water District. The vehicles will be used to respond to maintenance calls both preventative and emergency, responding to waterline breaks and repairs, any maintenance on other equipment such as pump stations, and other daily operations.
Letcher	City of Jenkins	Jenkins Evacuation Plan and Notification APP: The project will allow for an evacuation plan to be developed along with an app to notify residents in case of an emergency.
Letcher	City of Jenkins	Dam Repair Project: The project will allow for the repair of a crack in the Elkhorn Lake Dam and improvements to the Lake.
Letcher	City of Jenkins	Emergency Vehicle Purchase – Project will allow for the purchase of an emergency vehicle. Funding Applied for Community Facilities \$29,789 and Local \$9,930.
Letcher	City of Jenkins	Elkhorn Lake Improvements Project – Project will repairs to the dam which is the water supply for the City of Jenkins Water System. The project will also do some other improvements around the lake. AML Pilot Application submitted for \$2,580,000
Letcher	City of Jenkins	KY 805 Crossing, City Tank and Side Roads in Burdine Project – (\$1,000,000 ARC) The project will replace existing water lines and tank. Project will serve 159 residents.
Letcher	City of Jenkins	City of Jenkins - Payne Gap Waterline project – Total Project Cost \$1,593,503. Project will construct water line extensions along Hwy 119 from Jenkins, connecting Jenkins and Letcher County Water & Sewer District water systems. Project would serve more than 500 households. Project is complete.
Letcher	City of Jenkins	City of Jenkins - Water Line Improvement Project Phase II and Cane & McPeaks Branch - Total Project Cost of \$2,400,469. Project has completed McPeaks and Cane Branch. Remainder of project will

		replace waterlines along HWY 805 and adjacent streets. Project has been reduced due to current funding limitations. Project Complete.
Letcher	City of Jenkins	City of Jenkins – Water Line Improvements Project Phase IV – Total Project Cost \$2,400,000. Project will replace water lines on HWY 805 and adjacent roads in areas that have not yet been rehabbed. It will also rehab lines in the Marshall Branch Area. Project is complete
Letcher	City of Jenkins	City of Jenkins - Sewer Main Rehab Phase III - Total Project of \$1,585,000. Replacement of lines along HWY 805. Project Complete.
Letcher	City of Jenkins	Computer Equipment Purchase Project
Letcher	City of Jenkins	Emergency Vehicle Purchase – Project will allow for the purchase of an emergency vehicle. Funding Applied for Community Facilities \$29,789 and Local \$9,930.
Letcher	City of Jenkins	Jenkins WWTP Improvements Project – (\$960,000 ARC Pre-app and \$240,000 Applicant) This project will rehabilitate the existing wastewater treatment plant to more consistently meet existing discharge limits, as well as, provide for expansion to Gateway Industrial Park.
Letcher	City of Jenkins	Elkhorn Lake Improvements Project – (\$800,000 ARC Pre-app, \$1,000,000 CDBG and \$780,050 KIA) This project will improve safety, water quality, and recreation at Elkhorn Lake in Jenkins, Kentucky. Project will include: Geotechnical investigation of the dam, grouting of abutments to reduce leakage, closing one pipe penetration through the dam, rehab of concrete face of dam (built 1912-13) and principal spillway system, rehab of stream, and construction of walking trail and landscaping to aid with erosion control.
Letcher	City of Jenkins	City of Jenkins K-9 Law Enforcement Vehicle Purchase Project – (\$36,945.79 USDA RD and \$12,315 Applicant) This project will assist the City of Jenkins in purchasing a Law Enforcement Vehicle with build-out to protect and carry K-9 Officer.
Letcher	City of Fleming-neon	Sewer Rehabilitation Project – Project will rehab existing sewer service and reduce I/I.
Letcher	City of Fleming-Neon	Waterline Improvement Phase I – (\$1,191,114 KIA, \$1,000,000 CDBG, and \$600,000 ARC) Phase 1 will replace 10,200 LF of 8" PVC, 4,400 LF of 6" PVC, replace 13 flushing hydrants, remove old hydrants, install up to 149 radio read meters and replace lines on the following roads: Masters Drive, B Ball Drive, Shea Fork, Short Hollow, Band Mill Road, and HWY 343.
Letcher	City of Fleming-Neon	Waterline Improvement Phase 2: (\$1,000,000 CDBG and \$1,000,000 ARC) The project will replace old waterlines and a tank in the City of Fleming-Neon.
Letcher	City of Fleming-Neon	Water Treatment Plant Upgrade Project – funded through CDBG \$1,000,000; ARC \$500,000 and KIA/SRF \$1,500,000. The project will upgrade the existing water treatment plant. Constructed began October 2, 2017. The Project is expected to be complete Fall of 2018.
Letcher	City of Fleming-Neon	Fleming-Neon Sewer Rehabilitation Project – (\$1,558,120 KIA) Create a working map of the sewer system suitable for a flow study and for use during construction.
Letcher	City of Whitesburg	Water Storage Tank Rehabilitation – The project will clean, paint and inspect six existing tanks in the Whitesburg water system.
Letcher	City of Whitesburg	Whitesburg Wastewater Treatment Plant Construction Project – Construction of a new 600,000 GPO wastewater treatment plant for the City of Whitesburg. The financing for this project includes a \$2,000,000 CDBG grant, \$1,011,100 Environmental Protection Agency grant, \$1,000,000 Coal Development Fund grant, \$500,000 Appalachian

		Regional Commission grant, \$500,000 Coal Severance funds, \$1,000,000 KIA bond, and \$1,422,000 Rural Development funds.
Letcher	City of Whitesburg	Whitesburg Wastewater Treatment Plant Upgrade Project
Letcher	City of Whitesburg	Daniel Boone Hotel Stabilization Project – funded with \$1,000,000 ARC and POWER funds. The project will allow the Daniel Boone Hotel in Whitesburg to be stabilized, mold removal and demolition and a temporary roof put on.
Letcher	City of Whitesburg	Daniel Boone Hotel Renovation Project Phase 2 – (\$1,089,000 AML Pilot and \$1,089,000 ARC Pre-app) The project will renovate the building for multi-purpose use as a hotel, restaurant, retail, etc. The total cost is in excess of \$6,000,000. Various funding sources will be applied for to fund the project. The project will serve 30,000 clients and create 43-45 jobs.
Letcher	City of Whitesburg	Waterline Replacement and Tank Rehab Project – The project will replace old waterline and rehab one tank in the system. An ARC grant for \$652,500 and KIA Loan has been applied for. Total Project cost of \$1,305,000.
Letcher	City of Whitesburg	Water Storage Tank Replacement Project: (KIA \$600,000 and ARC \$500,000) Project will replace 2 water storage tanks that are currently leaking
Letcher	City of Whitesburg	Hwy 931 Waterline Extension Project: KIA \$2,200,000 This project will include the installation of 6", 4", 3" and 2" PVC, service lines and meters, flushing hydrants, water storage tank and a duplex pump station. along Hwy 931 in Letcher County.
Letcher	City of Whitesburg	Mayking Sewer Project Phase I: KIA \$2,000,000 ARC \$1,000,000 The project will extend sewer service to 270 customers in the Sergent/Mayking area of Letcher County.
Letcher	City of Whitesburg	Computer Software Purchase Project
Letcher	City of Whitesburg	Whitesburg I & I Phase 1 Project – (\$1,500,000 ARC) This project will be phase 1 of an SSES program that will include locating manholes, smoke testing, cleaning, and televised inspection of approximately 15,000' of gravity sewer line.
Letcher	Letcher County Fiscal Court	Letcher County Fiscal Court CDBG-CV Project: This project is aimed to help those who are delinquent in their utility payments as a result of the Covid 19 pandemic.
Letcher	Letcher County Fiscal Court	Letcher County Airport Project: The project will purchase property for the construction of an Airport in Isom. The total project cost of \$745,000 funded through RD and FAA.
Letcher	Letcher County Fiscal Court	Line Fork Fiber to the Premise Project – the project will allow for construction and design to run fiber to the community of Line Fork in Letcher County. ARC and POWER funds have been applied for to fund the project.
Letcher	Letcher County Fiscal Court	Regional Interconnect & Distribution Lines Cumberland River Phase IV – funding applied for includes CDBG \$1,000,000 and ARC \$500,000. The project will allow 210 households to get new water service in the Cumberland River area of Letcher County.
Letcher	Letcher County Fiscal Court	Emergency Vehicle Purchase – the project allows for the purchase of an emergency vehicle.
Letcher	Letcher County Fiscal Court	Body Armor Purchase Project - \$10,064 Law Enforcement Protection Program to purchase new body armor.
Letcher	Letcher County Fiscal Court	Emergency Vehicle Purchase – the project allows for the purchase of an emergency vehicle.
Letcher	Letcher County Fiscal Court	Federal Prison Project – The project will construct a federal prison in the Roxanna area of Letcher County. The project will bring 350 to 400 new

		jobs to Letcher County. The Environmental Review is complete. Waiting on the Federal Bureau of Prisons to release the Record of Decision.
Letcher	Letcher County Fiscal Court	Teleworks Hub: The Letcher County Fiscal Court is seeking funding to renovate the old Ermine Senior Center into a Teleworks Hub to create jobs in Letcher County.
Letcher	Letcher County Fiscal Court	Waste Sanitation Digester Center: The project will create a waste digester at the existing waste station. The project will create approximately 10 jobs. The total project cost is approximately \$4,500,000.
Letcher	Letcher County Fiscal Court	Crafts Colley I Dry Fork Sewer Project - The Letcher County Fiscal Court was awarded a CDBG Public Facilities grant and an ARC grant for the completion of the Crafts Colley I Dry Fork Sewer Project. They also received an additional PRIDE grant in the amount of \$400,000 to include additional homes in the Dry Fork area. The project now totaled \$1,500,000, and provided sanitary sewer service to approximately 90 new customers in the Crafts Colley and Dry Fork areas of the County. Project complete.
Letcher	Letcher County Fiscal Court	Letcher County Fiscal Court Pine Mountain Water Supply Feasibility Study- Estimated Project Cost of \$125,000.
Letcher	Letcher County Fiscal Court	Letcher County Loggy Hollow Water Line project (LGEDF line item \$370,000). Project complete
Letcher	Letcher County Fiscal Court	Letcher County WTP: This project will construct a 1,000,000 gallon per day Water Treatment Plant (WTP) at the Letcher and Perry line on Highway 7. This project will include construction of the plant, the intake with 387 LF of 8" DI to the intake and approximately 295 LF of 8" DI to tie into the existing Letcher County Water and Sewer District system. The total cost of the project is estimated to be \$9,600,000.00 and is expected to take 24 months to complete
Letcher	Letcher County Fiscal Court	Letcher County Solid Waste Digester: The facility will be comprised of and include construction of several components including a tipping building which will be an open-ended metal building with a treated concrete floor and quarter walls that will receive the mixed municipal waste dumped by truck and transferred to a mechanical feeder system discharging into the digester. The aerobic Rotating Drum Reactor (RDR) or Digester will process the mixture of solid waste and sewer sludge into the composting material. The organics will be separated to compost window areas and the inorganics will be separated for recycling or hauled to a landfill at much less weight with the organics removed. The project also includes site improvements to include stormwater control and placement of compacted durable rock filling material for final grade and drainage control as well as structure foundation strength. The project will also include installation of 3 phase power, purchase of a wheel loader machine, a skid steer loader and compost turner for withdrawing the compost material which are all essential for the operation of the facility.
Letcher	Letcher County Airport Board	Letcher County Airport Land Acquisition Project – (\$420,000 USDA RD) This project will assist the Letcher County Airport Board in obtaining property on which to build a general aviation airport.
Letcher	Letcher County Planning Commission	Letcher County Federal Prison Project – Letcher County Planning Commission received an Economic Development Administration Grant to prepare a strategic plan to evaluate potential federal prison sites, etc. to aid in the recruitment of a federal prison to the Letcher County area. Project Complete.

Letcher	Letcher County Tourism	Thunder Mountain Resort: The project will construct a resort on Thunder Mountain in Letcher County to include a shooting range, casting pond, stage, lodging, archery and many other adventure based activities.
Letcher	Letcher County Water & Sewer District	RedStar Waterline project Letcher Co. (AML \$1,600,000). Project is funded and should go to bid soon.
Letcher	Letcher County Water & Sewer District	Thornton Water Line project Letcher Co. (LGEDF and KIA \$1,800,000) Project Complete.
Letcher	Letcher County Water & Sewer District	Millstone Waterlines project Letcher Co. (KIA \$750,000) Project Complete.
Letcher	Letcher County Water & Sewer District	HWY 160/Premium Phase II (ARC \$500,000; KIA HB1 \$344,000) Project Complete.
Letcher	Letcher County Water & Sewer District	Letcher County Deane project (AML \$1,000,000, LGEDF line item \$150,000) Project Complete
Letcher	Letcher County Water & Sewer District	Letcher County Pert Pine Cram Creek Waterline (LGEDF line item \$500,000, AML \$2,000,000) Project Complete.
Letcher	Letcher County Water & Sewer District	Letcher County Millstone alternative wastewater project (funding being developed)
Letcher	Letcher County Water & Sewer District	Federal Prison Waterline Extension Project – Letcher Co WTP – KIA \$4,000,000, EDA \$2,000,000, ARC \$1,336,000 and RD \$500,000 Project will construct a Water Treatment Plant that will serve the Letcher County Water District and the Federal Prison at Roxanna.
Letcher	Letcher County Water & Sewer District	WWTP for Federal Prison at Roxanna – The project will construct an onsite WWTP to serve the federal prison. Funding is being sought.
Letcher	Letcher County Water & Sewer District	Cumberland River Waterline Extension Phase I – funded with ARC \$500,000 and Coal Severance funds the project will construct new water service to 69 homes in the Cumberland River area of Letcher County.
Letcher	Letcher County Water & Sewer District	Cumberland River Waterline Extension Phase III- (AML)
Letcher	Letcher County Water & Sewer District	Cumberland River Waterline Ext Project - Regional interconnect & Distribution Lines Cumberland River Phase IV - Establish a regional interconnect with the City of Cumberland as well as the construction of distribution lines and facilities providing a first-time source of potable water for many area residents. (AML \$1,000,000, KIA \$2,487,495, LGEDF \$708,539, ARC \$500,000)
Letcher	Letcher County Water & Sewer District	Letcher County WTP Project – (\$4,000,000 KIA, \$2,000,000 EDA, \$500,000 USDA RD and \$1,336,000 ARC) This project will construct a 1,000,000 GPD water treatment plant at the Letcher and Perry County line on Highway 7. The plant will be owned and operated by the LCWSD.
Owsley	City of Booneville	Lift station Rehab Project; The \$500,000 ARC grant will allow for the rehab of an existing lift station in the City of Booneville system.
Owsley	City of Booneville	Fish Creek School Road Housing Project – the project will construct new single family homes. Funding applied for CDBG \$1,000,000, HOME \$290,011 and LB Cincinnati \$106,000.
Owsley	City of Booneville	Booneville Waterline Rehabilitation Phase 2: The project will allow for the old waterlines to be replaced at an estimated cost of \$600,000. The City anticipates applying for funding in Spring 2020.
Owsley	City of Booneville	Radio Read Project; (\$1,000,000 ARC) Project will replace 1,160 meters with radio read meters and purchase the hardware and software
Owsley	City of Booneville	Emergency Vehicle Purchase – Community Facilities Grant to purchase a new emergency vehicle for the police department
Owsley	City of Booneville	Booneville I/I Rehabilitation Project – ARC for \$1,526,000 to do sewer rehabilitation throughout the system to reduce I/I. Project will conduct a

		SSES survey of the sewer system, replace 8,280 LF of problematic sewer lines and 49 manholes
Owsley	City of Booneville	Booneville Wastewater Extension Project (\$4,273,300) – Extension of sewer service to areas of Owsley County previously unserved. The project also provided improved sewer service to the Lone Oak Industrial Park.
Owsley	City of Booneville	Booneville Water Treatment Plant Rehabilitation – (\$900,000 ARC and \$839,000 CDBG) Th Project will replace and add water treatment and monitoring equipment that serves approximately 1,600 customers in Owsley County.
Owsley	City of Booneville	Hwy 11 North Water Tank Replacement Project: Replace the City of Booneville's 100,000 gallon Elk Lick ground storage tank and valve vault, and install telemetry on the tank. The Elk Lick tank and valve vault were built in the mid 1970s, and has thus reached its' expected service life. Both the tank and associated valve vault are in poor condition, showing signs of severe rust and corrosion on the outside. There is currently one leak near the base of the tank that has been repaired.
Owsley	City of Booneville	Booneville Pump Station Rehab – (ARC \$500,000) Project will rehab 11 pump stations in the Booneville Sewer System and extend water service to 32 new households.
Owsley	City of Booneville	Booneville Waterline Rehab Phase 1 – (ARC \$500,000) Project will replace 5,200 LF of the oldest, problematic waterlines in the Boonville Water System, install flow meters, replace hydrants.
Owsley	City of Booneville	Booneville Excavator Project – (\$48,500 USDA CF) This project will purchase a 2019 John Deere 35G Mini Excavator for the Booneville Water Department.
Owsley	City of Booneville	Booneville Dump Truck Project – (\$64,590 USDA CF) This project will purchase a 2020 Dodge Ram 3500 Regular Cab Dump Truck for the Booneville Water Department.
Owsley	Owsley County Action Team	Business Incubator and Training Facility: The project is estimated at \$3,000,000 and will apply for funding in the Spring of 2020 from various sources.
Owsley	Owsley County Alliance for Recreation	Seale Theater Project: The project will allow for renovation of the existing Seale Theater in Booneville to be renovated into a Theater and meeting space. The first phase of the project will be applying for a Brownfields Clean-up grant for approximately \$300,000.
Owsley	Owsley County Fiscal Court	Milltown Sidewalk Project - KYTC TAP \$160,000 and Local \$40,000. The project will extend new sidewalk in the Milltown Subdivision.
Owsley	Owsley County Fiscal Court	Owsley County Spencer Fork Family Resources Center project (USDA RD \$30,000)
Owsley	Owsley County Fiscal Court	Owsley County Housing Project (CDBG \$200,000, other \$200,000) Project Complete
Owsley	Owsley County Fiscal Court	Body Armor Purchase Project - Law Enforcement Protection Program \$2,660. The project will purchase 4 new body armor vests.
Owsley	Owsley County Fiscal Court	Duty Weapon Purchase Project – Purchase of 5 duty and 5 off duty weapons for the Owsley County Sheriff's Department
Owsley	Owsley County Fiscal Court	Owsley County Jail Renovation Project – Convert old jail into a bed and breakfast.
Owsley	Owsley County Fiscal Court	Owsley County Recreation Center Energy Efficiency Project – Install solar panels
Owsley	Owsley County Fiscal Court	Owsley County Park – Improvements to the park.
Owsley	Owsley County Fiscal Court	Sturgeon Creek Adventures – AML Pilot Application submitted for \$2,095,000. The project will create an adventure park including a

		campground. The project will serve 50,000 clients per year and create 19 jobs.
Owsley	Owsley County Industrial Authority	Booneville Wastewater Extension Project (\$4,273,300) –Extension of sewer service to areas of Owsley County previously unserved. The project also provided improved sewer service to the Lone Oak Industrial Park.
Owsley	Owsley County Industrial Authority	Owsley County Industrial Park Access & Water/Sewer – Construction of an access road and provision of water and sewer service to the Lone Oak Industrial Park.
Perry	City of Hazard	Emergency Vehicle Purchase Project – \$110,000 for the purchase of 2 emergency vehicles for the Fire Department. Funded through Community Facilities Grant
Perry	City of Hazard	City of Hazard Skid Steer & Dump Truck Purchase: A proposed purchase of a utility vehicle through a Community Facilities Grant
Perry	City of Hazard	City of Hazard Darfork Sanitary Sewer Project (for new East Perry Elementary School)-Estimated Project Cost of \$480,095. Will extend sewer lines to service the new East Perry Elementary School and allow for future development of the 100+ acre site surrounding the new school site. The project will service approximately 7 households on Darfork Hollow Road. Project complete.
Perry	City of Hazard	Phase 1 Hazard Sanitary Sewer Improvements Project - ARC \$480,000 and Local \$120,000.
Perry	City of Hazard	Gas Line Project for the Industrial Park – the project will extend gas lines to the Industrial Park so as to attract new business
Perry	City of Hazard	Natural Gas Extension Project: The project will extend natural gas into the Coal Fields Industrial Park at an estimated cost of \$2,910,000 and construction will begin in the late 2019.
Perry	City of Hazard	Lothair Waterline Replacement Project: The project will allow for the replacing of old water lines in the City of Hazard water System. ARC \$800,000 and KIA \$1,150,000 for a total project cost at \$1,950,000.
Perry	City of Hazard	Christopher Waterline Replacement Project: The project will allow for the replacing of old waterlines in the Christopher community of Hazard. The total project cost is estimated at \$1,950,000.
Perry	City of Hazard	Hazard WTP Project: The project will construct a satellite plant in the Jeff community of Perry County to help alleviate water issues the City of Hazard has experienced in the winter months over the past several years.
Perry	City of Hazard	Generator Project: (\$320,486 FEMA) This project will supply the City of Hazard with two (2) Generators for the WTP and WWTP.
Perry	City of Hazard	Hazard Amphitheater – LWCF \$52,523 Local \$54,230 Project will construct a permanent stage at the Hazard Amphitheater.
Perry	City of Hazard	Hazard Tank Replacement: (ARC \$800,000/KIA\$1,637,500) Replacement of a water tank
Perry	City of Hazard	Buckhorn Water Treatment Plant – (ARC - \$1,000,000, AML Pilot - \$5,000,000, and CDBG - \$2,000,000) The project will construct a 2 MBD Water Treatment Plant located in Buckhorn, on the Middle Fork of the Kentucky River which will service the Buckhorn, Chavies, Coal Fields Industrial Park and Northern Perry County areas.
Perry	City of Hazard	Buckhorn WTP Raw Water Intake Project – (\$860,000 ARC and \$215,000 Local) The project will supply source water to a new WTP to be constructed adjacent to the intake which will provide reliable service to the Village of Buckhorn, community of Chavies to the east,

		KY RT 28 customers, and the RT 15 area. The KY 15 area includes the Coalfields Industrial Park.
Perry	City of Hazard	Buckhorn Middle Fork to Chavies Transmission Line – (ARC - \$547,800, AML Pilot - \$2,500,000) The project will replace the existing waterline from the City of Hazard master meter at Chavies with a 10" transmission line to allow sufficient water to be pumped from the proposed Buckhorn WTP to serve Hazard's demands down KY 28 to KY 15 and the Coal Fields Industrial Park. The transmission line will include approximately 54,000 LF of new waterline and 2 new booster pumps capable of moving 700 GPM each to the Hazard systems to the east.
Perry	City of Hazard	Hazard Sanitary Trunk Replacement Project - (\$1,000,000 and \$1,131,000 KIA) This project will replace all of the 60-year-old Armco Steel (1) "Smooth Flow (2)" 30" diameter steel sanitary sewer trunk for the City of Hazard.
Perry	City of Hazard	Hazard Emergency Tank Replacement Phase 4 – (\$800,000 ARC and \$1,637,500 KIA) This project will replace the water tank on Liberty Street. The project will construct two 1,000,000 gallon ground storage tanks at the existing location. The existing tank will be demolished upon completion of one of the two new tanks. The project will include telemetry. Currently, the existing 2,000,000 gallon tank feeds the entire Hazard system from the plant, when the tank has issues or needs maintenance, the system must be taken offline.
Perry	City of Hazard	City of Hazard Downtown Redevelopment Project – (\$3,918.135 AML Pilot) This project will perform infrastructure improvements on both the water and sewer lines in the downtown area. The project will also provide updates to broadband services, electric services, sidewalks and various other spot improvements.
Perry	City of Hazard	City of Hazard CDBG-CV: This project aims to assist those who have become delinquent in their utility payments as a result of the Covid 19 Pandemic
Perry	City of Hazard	KY 15 – KY 7 Interconnect: (AML: \$2,884,980) The project will construct an interconnection between the Perry County Water and Sewer Water System and the City of Hazard Water System. The interconnect will tie the existing 8" PVC line on KY Highway 15 at Scuddy in Perry County and construct west along the Right of Way 27,000 linear feet and tie into the existing City of Hazard's 10" line on KY Highway 7 at Jeff, KY. A Master Meter will be controlled by SCADA for supply up KY Highway 7 to the Southern end of Perry County. The project will require four CSX Railroad crossings and four creek/river crossings. These railroad and creek/river crossings would be constructed by either the Jack and Bore method using steel casing with the carrier pipe or the HDD method with 8" DR 7.3 HDPE pipe and the water line that will be trenched will utilize 8" SDR 17 PVC pipe. There will also be a 150,000 gallon water storage tank that will be constructed at Red Oak Mountain adjacent to an existing storage tank that currently serves the Perry/Vicco system. The project will help reduce stress on the City of Hazard Water System. The water supply will come from the Carr Creek Lake /Knott County Water Treatment plant in Knott County which currently serves the Perry/Vicco water system. This project will not require any pumping due to being a gravity feed interconnect. The Knott County Water Treatment plant is a 4 MGD water treatment plant withdrawing from Carr Creek Lake and has the excess capacity to provide service for the KY RT 7 area of Perry County. The Perry County Water System purchases water from the Knott County system. The City of Hazard will purchase water from Perry County Water System.

Perry	Perry County Fiscal Court	Ambulance Center: The Perry County Fiscal Court will purchase the Manufacturing Supply building and renovate the structure to use for the new ambulance center.
Perry	Perry County Fiscal Court	Perry Building Renovation Project (Sykes): The Perry County Fiscal Court will take possession of the Sykes building and renovate the interior. The Perry County Fiscal Court has partnered with Sykes and Intuit for this project which will bring 300 jobs to the region. The total project cost is estimated at \$3,562,352 and construction will begin around the 1 st of December 2019.
Perry	Perry County Fiscal Court	Perry County Furniture Project (Sykes): The Perry County Fiscal Court will help supply Sykes with new furniture for their office building through the use of an ARC grant
Perry	Perry County Fiscal Court	Perry County WiFi Project: (\$310,000 ARC and \$75,241 Local) The project will construct WiFi in the downtown area of the City of Hazard and in the Perry County Park.
Perry	Perry County Fiscal Court	Perry Building Purchase and Renovation Project: The Perry County Fiscal Court will purchase the old Dawahare's building and allow for it to be renovated for office space to be rented to the ARH.
Perry	Perry County Fiscal Court	Victo WWTP & Sewer Collection Project: The project will construct a new WWTP and rehab the existing sewer lines. The project is funded through ARC and Section 531 funds. Project construction will begin in Spring of 2020.
Perry	Perry County Fiscal Court	East Perry Commercial Development Project – Project will allow for the necessary infrastructure for the development of a commercial development project. ARC funds approved.
Perry	Perry County Fiscal Court	Drone Port of Kentucky Project – the project will provide planning for the implementation of a Drone Port of Kentucky project that will create over 200 jobs within 5 years after implementation.
Perry	Perry County Fiscal Court	Buckhorn Lodge Bore Project – The project will repair a waterline that serves the Buckhorn Lake State Resort Park Lodge. The land around the existing line slips causing the line to break leaving the lodge without a water source. AML Pilot submitted for \$97,290. The project will serve 30,000 clients and retain 38 jobs.
Perry	Perry County Fiscal court	Laurel Mountain Road Waterline Extension Project - CDBG \$287,023 and Local \$71,756. The project will construct new waterline service to approximately 30 homes.
Perry	Perry County Fiscal Court	Upper Second Creek Sewer Extension Project – extend 11 miles of sewer collection serving 241 homes and businesses
Perry	Perry County Fiscal Court	Perry Park Revitalization Project – complete rework/expansion of the Perry County Park.
Perry	Perry County Fiscal Court	Perry County Facilities Energy Efficiency Upgrades – energy efficiency retrofits for Courthouse, justice center, etc.
Perry	Perry County Fiscal Court	South Perry Elementary Access Road – Develop road to access the proposed South Perry Elementary School site.
Perry	Perry County Fiscal Court	Challenger Center Stem Program Funding – Funding for 3 additional instructor's salaries for 2 years.
Perry	Perry County Fiscal Court	Brownfields Redevelopment – Repurpose EPA designated Brownsfield sites.
Perry	Perry County Fiscal Court	Golf Course Development – Develop a premier 18 hole golf course
Perry	Perry County Fiscal Court	Regional Recycle Center Project – public/private recycle repurpose center.

Perry	Perry County Fiscal Court	Wellness Center- develop a new wellness center.
Perry	Perry County Fiscal Court	Small Business Assistance Incubator Facility – Provide a shared resources Small business Creation.
Perry	Perry County Fiscal Court	Regional Water Park – Construction of a 12 month in-door/out-door park and lodging
Perry	Perry County Fiscal Court	Perry County Fiscal Court - Perry County Regional Water Study - Total Project Cost of \$30,000. Feasibility study to look at two options--- A plant at Buckhorn Lake and the ability of Carr Creek Plant to service Perry County. Currently underway.
Perry	Perry County Fiscal Court	Perry County Fiscal Court - North Perry Water Project Phase II - Total Project Cost of \$280,000. Project will provide water service to residents located in Stable Fork (8 households), Ladder Branch (19 households) and Pump (AKA Pomp) Hollow (6 households). Projects are constructed.
Perry	Perry County Fiscal Court	Perry County Fiscal Court - South Perry Water Project Phase IV - Total Project Cost of \$337,321. Project will provide water service to Right Fork of Beehive (12 households); Owens Branch (10 households); Primrose Lane (6 households); Beetree Fork (6 households) and Lauren Lane (4 households). Projects are constructed.
Perry	Perry County Fiscal Court	Perry County Fiscal Court-Fort Branch Water Line Extension Project –Total Project Cost \$977,829. Project will provide water service to 51 households in the area. Project Complete.
Perry	Perry County Fiscal Court	Perry County Fiscal Court-Lewis Hollow Water Line Extension – Total Project Cost \$210,135. Project will construct water lines to service 12 households. Project is complete.
Perry	Perry County Fiscal Court	Perry County Fiscal Court –Pomp Hollow Water Line Extension – Total Project Cost \$152,493. Project will provide water service to 7 households. Project is complete.
Perry	Perry County Fiscal Court	Perry County Fiscal Court Regional GPS of Manholes, Valves and Hydrants Project- Estimated Project Cost of \$137,200.
Perry	Perry County Fiscal Court	River Trail Development - Develop a river walk from Carr Fork Lake to Buckhorn Lake
Perry	Perry County Fiscal Court	East Perry Commercial Development Project – ARC and Local (ARC \$1,254,320 and \$313,580 City of Hazard) Project will construct water, sewer, storm and gas to the proposed East Perry Shopping Center
Perry	Perry County Fiscal Court	KY 80/476 Interconnect – ARC and AML (ARC \$500,000 AML \$1,200,000) Project will provide an interconnection, pump station and water storage tank between the Knott Co Water & Sewer District and City of Hazard Water System for use in emergency water outage situations.
Perry	Perry County Fiscal Court	Vicco Sewer Project – 531 and ARC and Local (USACOE 531 \$580,704, ARC \$1,169,986 and Local \$23,568) Project will construct a 1MG WWTP and replace broken sewer lines.
Perry	Perry County Fiscal Court	Perry Building Sykes Renovation – (CDBG \$2,000,000 and ARC \$1,356,352) Project will renovate the interior of the Sykes Building to allow the creation of 200+ jobs
Perry	Perry County Fiscal Court	Perry Building Renovation Phase II - Sykes Furniture – ARC \$1,143,333 Project will provide furniture/office equipment for the Sykes project.
Perry	Perry County Fiscal Court	KY 15- KY 7 City of Hazard Interconnect – (\$2,884,980 AML) This project will construct an interconnection between the Perry County Water

		and Sewer Water System and the City of Hazard Water System. The interconnect will tie the existing 8" PVC line on KY HWY 15 at Scuddy in Perry County and construct west along the Right of Way 27,000 linear feet and tie into the existing City of Hazard's 10" line on KY HWY 7 at Jeff, KY.
Perry	Perry County Fiscal Court	Dawahares Project - Project will allow for the purchase and renovation of the former Dawahare's building, renovate the city parking structure, purchase and demolish the Bell's Market Building for handicap and executive parking and purchase and renovate the Broke Spoke building to renovate for retail space. CDBG Grant app - EDA \$3,000,000, AML Pilot \$2,788,000 and ARC \$1,500,000
Perry	Perry County Fiscal Court	Dajcor Anodize Facilities Project – (\$1,070,000 ARC, \$1,000,000 CDBG and \$2,430,000 LPI) The project will allow for the purchase of an anodizing line at the newly renovated Dajcor Aluminum Plant in the Coal Fields Industrial Park, adding an additional 50 jobs to the region, 3-5 years ahead of the scheduled 10 year plan.
Perry	Perry County Fiscal Court	Drone Port Phase II – Project will include the addition of a USA Drone Port Business Center, Aquatic Robotics Lab, outdoor netted robotic testing range, and a ground robotic testing range. Total project cost is \$3,175,500. An AML Pilot application has been submitted.
Perry	Perry County Fiscal Court	Perry Various Roads Water Extension Project – (\$1,021,450 AML Pilot and \$1,021,450 ARC Pre App) This project will construct approximately 37,150 Linear Feet of new waterline and provide 23 households first time potable water services.
Perry	Perry County Fiscal Court	Roark Mtn Waterline Project – (\$66,435 Coal Sev) This project extends waterlines along Roark Mountain.
Perry	Perry County Fiscal Court	Perry County Fiscal Court CDBG-CV: (CDBG-CV \$200,000) This project aims to assist those who have become delinquent on their utility payments as a result of the Covid 19 Pandemic
Perry	Perry County Sanitation District #1	Perry County Sanitation District #1 Chavies Sanitary Sewer Extension Phase 1 – Extension of approximately 11,245 linear feet of sewer force main to serve the KY Hwy 28 area from Combs Branch Road to the Chavies Elementary School, including the noodle creek area. 30 new customers will receive sewer service through this project. At the completion of the project, two package plants will also be taken out of service. This is the first phase in a multi-phase effort planned and designed to systematically extend the wastewater collection system. The total cost of this phase of the project is \$680,000. The District was awarded \$180,000 in Coal Severance funding and \$500,000 in Appalachian Regional Commission grant funds. Project will go to bid October 2017.
Perry	Perry County Sanitation District #1	Chavies WWTP Collection Phase 2 – ARC \$500,000 and Local \$125,000 to construct new sewer lines. Project is funded and going to bid October 2017.
Perry	Perry County Sanitation District – Chavies	Chavies WWTP Collection Chavies School to Haddock Fork – ARC \$625,000 approved to construct new sewer service along Hwy 28 and Haddock Fork in Perry Co.
Perry	Perry County Sanitation District #1	Wendell H. Ford Airport Sewer Extension Project Phase 1: (\$814,000 ARC) This project is the 1st of 3 phases. The project will provide sanitary sewer service to 35 households on KY 28 and Beech Branch in Perry County and add 400+ customers, including the industrial park. This project will also include one lift station, 7,000 LF of 6" PVC Force Main, 3,300 LF 4" PVC Force Main and 4,600 LF of 1.5" PVC Force Main.

Perry	Perry County Water & Sewer	Vicco Wastewater Plant/Line Replacements – new package treatment plant adjacent to the existing plant.
Perry	Village of Buckhorn	Village of Buckhorn-Route 28 Waterline Extension – Total Project Cost \$110,793. Project is phase 1 of 2 that will simultaneously be constructed in the area. This phase will re-route the water line that currently runs along the lake to improve service to residents. Project is complete.
Perry	Village of Buckhorn	Buckhorn Sanitary Sewer Line and Buckhorn WTP Raw Water Intake Project – (\$200,000 ARC and \$787,800 USACOE) This project will intercept two existing sanitary sewer package plants (Buckhorn Children's Center and Buckhorn Elementary School) within the Buckhorn city limits.
Perry	City of Vicco	City of Vicco Water Bill Project - Total project Cost of \$150,000. Project will repay old water debt owed by the City. Project will also repair several fire hydrants to reduce water loss. Project Complete.
Perry	City of Vicco	City of Vicco Wastewater Treatment Plant Phase III - Estimated Project Cost of \$2,036,800. Will construct a new WWTP to replace the existing plant, demolish the existing plant and construct a low-water crossing to allow all weather access to the plant.
Perry	City of Vicco	City of Vicco Wastewater Treatment Plant Phase II - Estimated Project Cost of \$200,000. Will allow for rehabilitation of the existing WWTP to get in compliance with the Agreed Order. Project Complete.
Perry	City of Vicco	City of Vicco Park Equipment Project - The Project will allow for the purchase of property in downtown Vicco for development of a City Park. The project will allow for the purchase of playground equipment. Project Complete.
Wolfe	City of Campton	Spring Branch Waterline Project: The \$600,000 project is funded through ARC and will extend new water service to residents in the Spring Branch Community.
Wolfe	City of Campton	Campton Tank Replacement: (ARC \$635,367/CDBG \$1,000,000)
Wolfe	City of Campton	South Valeria Water Project: (\$2,054,000 CDBG and \$2,054,000 ARC Full App) Project will extend 50,688 LF of waterline to serve 66 residents in the South Valeria area of Wolfe County.
Wolfe	City of Campton	Campton Wastewater Treatment Plant (\$3,610,125) – Construction of a new wastewater treatment plant to serve the City of Campton and surrounding areas of Wolfe County. The plant also allowed for the provision of sewer service to the Pine Ridge Regional Business Park. Project Complete.
Wolfe	City of Campton	Campton Trail Project (RTP \$51,500; Local \$51,500) Project complete.
Wolfe	City of Campton	Campton Water Line Project (HB1 \$100,000) Project complete
Wolfe	City of Campton	Campton Sewer Line Project (CDBG \$1,000,000; ARC \$525,000; US Corps of Engineers Sect. 531 \$275,000; KIA Loan \$1,400,000) Pippa Passes Caney Creek Sewer Rehab Project (US Corps of Engineers Sect. 531 grant \$250,000; USDA RD grant \$100,000). Project Complete.
Wolfe	City of Campton	Campton Water Plant (KIA \$4,498,888; USDA RD \$1,784,000; ARC \$300,000; KIA Joan \$683,200). Project Complete.
Wolfe	City of Campton	Campton Safe Routes to School Project – funded through a \$200,000 KYTC TAP Grant the project will extend new sidewalks along Washington Street to the new Campton Elementary School. The project is in the design phase.
Wolfe	City of Campton	Campton Sewer Rehab Project – funded with CDBG grant in the amount of \$249,000. The project allows for broken, cracked sewer lines

		to be dug up and replaced with new sewer lines to reduce infiltration and inflow. Project Complete.
Wolfe	City of Campton	Various Waterline Extension Project – Project will extend new water service to approximately 39 homes.
Wolfe	City of Campton	Pine Ridge Water Tank and Line Replacement Project – CDBG \$1,000,000, ARC \$635,367, Program Income \$442,416 and KIA \$22,217 Project will replace the existing Pine Ridge Water Storage Tank with a new elevated Water Storage Tank, replace one pump station and construct one new pump station and extend new water service along various roads in Wolfe County
Wolfe	City of Campton	Emergency Vehicle Purchase Project - \$79,591 Community Facilities Grant to purchase 3 utility vehicles. The project is now complete.
Wolfe	City of Campton	Spring Branch Waterline Extension – ARC \$600,000 Project will extend 12,123 LF of new waterlines along Spring Branch, Pryce Fork, Kelse Holland Fork and Becky Patton Road in Wolfe County
Wolfe	City of Campton	Hazel Green Water Line Extension – (\$2,499,500 ARC) This project will extend water line to KY 1010, Amburgey Lane, Lacy Creek - Gilmore RD (KY 1953), Johnson Fork (1006) and Buchanan Fork RD to serve 62 households as well as replace the Trent Booster Pump Station.
Wolfe	City of Campton	Utility Vehicle Purchase Project – (\$95,599.85 USDA CF) This project will purchase a Utility Vehicle, air compressor, and work trailer for the City's Department of Maintenance.
Wolfe	City of Campton	Campton Park Improvements: (LWCF) This project will make improvements to the local park that are ADA compliant and offers equipment for the special needs population.
Wolfe	City of Campton	Utility Vehicle Purchase Project: (CF: \$43,723) The City of Campton is seeking \$43,723.00 for the purchase of two utility vehicles. The total project cost is \$58,297.00. The two utility vehicles, a 2021 Ford F-150 regular cab 4X4 and a 2021 Ford F-150 super cab 4X4 XL, will be purchased for use by the City of Campton. The City of Campton will be utilizing these vehicles for emergency weather situations and waterline maintenance. The City of Campton utility services serve customers in the City of Campton and in Wolfe County.
Wolfe	Hazel Green Community Church	Hazel Green Academy Administration/Auditorium/Gym Brownsfield Clean-up Grant
Wolfe	Wolfe County Fiscal Court	Hazel Green WWTP & Collection Line Project - CDBG \$1,000,000; ARC \$500,000 and KIA \$1,789,150
Wolfe	Wolfe County Fiscal Court	Wolfe/Morgan Agriculture Industrial park project (program income \$250,000. Project complete.
Wolfe	Wolfe County Fiscal Court	Helechawa Park Development Project – funded through \$52,354 local funds and \$52,354 Land and Water Conservation Funds. The project will construct a new park to include a baseball field, basketball courts, bathroom, picnic shelter and playground equipment in the Helechawa Community of Wolfe County.
Wolfe	Wolfe County Fiscal Court	Dump Truck & Equipment Purchase – (\$104,638 USDA CF) This project will purchase a dump truck, vehicle safety lights, and road work safety signs for the County's Road Department.
Wolfe	Wolfe County Fiscal Court	Wolfe County Fiscal Court CDBG-CV: (CDBG-CV) This project aims to assist those who have become delinquent in their utility payments as a result of the Covid 19 Pandemic
Wolfe	Wolfe County Sanitation District	Hazel Green Wastewater Collection System Phase 1 - will construct a new 200gpm pump station at Helechawa where the Chop Shop is located and extend 52,230 LF of 6" force main to the West Liberty Morgan Central (WLMC) Lift Station to then be pumped to and treated by the West Liberty

		<p>WWTP. The WLMC Lift Station would be upgraded from the existing capacity of 98 gpm to 300 gpm to accommodate future flow. This project will allow the Chop Shop to add a second shift to their production increasing their staff by additional 38 employees. It will also assist in the retention of 39 employees. An AML Pilot has been applied for in the amount of \$1,840,000.</p>
--	--	-------------------------------------------------------------------------------------------------------------------------------------------------------------------------------------------------------------------------------------------------------------------------------------------------------------------------------------------------------------------------------------------

TRANSPORTATION IMPROVEMENT PROJECTS

ID	County	Route	Type of Work	Description
10-376.00	Breathitt	KY 15	MAJOR WIDENING(O)	IMPROVE KY-15 FROM THE INTERSECTION OF NEW KY-15/30 TO INTERSECTION OF KY-1812. (2020CCR)
10-5014.00	Breathitt	KY 15	LANDSLIDE REPAIR(P)	ROCKFALL MITIGATION ON KY 15 FROM 0.593 MILE NORTH OF BEAVERLY ROAD (MP 13.750) TO KY 1098/KY 1813 (MP 14.644). (2018BOP)
IP20110007	Breathitt	KY 30	Reconstruction	<p>Improve safety and substandard geometrics for KY 30 in Breathitt County across Shoulderblade Hill.Â</p> <p>To improve roadway geometrics to enhance safety and local mobility between Jackson and Booneville and regional connectivity between the Hal Rogers Parkway and I-75 in London and KY 15 in Jackson.</p>
10-375.00	Breathitt	KY 205	MINOR WIDENING(O)	IMPROVE KY-205 FROM NORTH OF KY-1812 TO SOUTH OF PEGGS FORK RD. (2020CCR)
10-80106.00	Breathitt	KY 15	REALIGNMENT	IMPROVE INTERSECTION OF KY 15 AND THORPE RD AT MP 8.837 (2020CCN)
10-80107.00	Breathitt	CR 1125	BRIDGE REPLACEMENT(P)	REPLACE BRIDGE OVER PUNCHEON CREEK ON MAX ROARK RD (2020CCN)
IP20080662	Knott	KY 160	Reconstruction	Improve safety and substandard geometrics with a new facility that meets current standards from KY 899 to KY 3391.
IP20210095	Knott	KY 15	Safety-Haz-Elm	Improvements to the intersection of KY 15 and KY 1231 (Big Branch Rd.) around Carr Fork Lake.
IP20110151	Knott	KY 80	Safety-Haz-Elm	Eliminate rockfall hazards from KY 2029 to Rock Fork Road.
IP20080663	Knott	KY 899	Safety-Haz-Elm	Provide a better transition at this curve, from the new section to the old section at the bottom of the hill at Short Branch near Pippa Passes.
IP20110150	Knott	KY 80	Safety-Haz-Elm	Eliminate rockfall hazards 0.2 mile west of Intersection of KY 1087 & KY 80.

12-8200.00	Knott	KY 1231	RESURFACING(P)	NEW CONSTRUCTION OF ONE MILE STRETCH OF KY-1231 BEGINNING AT BRIDGE AFTER LEAVING KY-550. (04CCN)(06CCR)(08CCR)(10CCR)(12CCR) (2020CCN)
IP20110152	Knott	KY 1087	Safety-Haz-Elm	Curve revision 3.654 miles east of intersection of KY 3209 & KY 1087.
10-292.40	Lee	KY 11	RECONSTRUCTION(O)	I-75 TO MOUNTAIN PARKWAY; RECONSTRUCT KY-11 FROM 0.5 MILE SOUTH OF KY-587 TO 0.65 MILE NORTH OF KY-52 IN BEATTYVILLE AND CONSTRUCT BRIDGE OVER KENTUCKY RIVER.
10-80102.00	Lee	KY 11	SAFETY(P)	EXTEND TWO WAY LEFT TURNING LANE FROM .047 MILES NORTH OF LEE COUNTY SENIOR CITIZENS CENTER TO .103 MILES SOUTH OF GRAND AVE (2020CCN)
10-292.12	Lee	KY 587	RECONSTRUCTION(O)	Upgrade geometrics on KY 587 from MP 11.65 to the intersection with KY 11. (SEE 10-292.10 FOR D,R,U PHASES)
IP20110010	Lee	KY 52	Safety-Haz-Elm	Curve revision on KY 52 at Horseshoe Bend ending 0.297 miles West of Hawes Rd.
10-80103.00	Lee	KY 11	SAFETY(P)	ADD TURN LANE AT THE INTERSECTION OF KY 11 AND KY 498 (2020CCN)
IP20150110	Lee	KY 52	Culvert Replacement	Replace or Repair multiple culverts along KY 52 in Lee County.
10-80104.00	Lee	KY 399	RECONSTRUCTION(O)	RECONSTRUCT ALONG KY 399 BETWEEN MP 5.75 AND 6.2 (2020CCN)
10-149.00	Lee	KY 399	RECONSTRUCTION	Geometric improvements along KY 399 in Lee County.
11-8913.00	Leslie	HR 9006	MAJOR WIDENING(O)	UPGRADE ROUTE FROM SOMERSET TO HAZARD TO INTERSTATE STANDARDS: 4 LANE FROM HYDEN SPUR TO LESLIE/PERRY LINE (SEGMENT 10). (16CCN)(18CCN)
11-8912.00	Leslie	HR 9006	MINOR WIDENING(O)	UPGRADE ROUTE FROM SOMERSET TO HAZARD TO INTERSTATE STANDARDS: 4 LANE FROM CLAY/LESLIE LINE TO HYDEN SPUR, MP 35.929 TO MP 44.188 (SEGMENT 9). (16CCN)(18CCN)
IP20110205	Leslie	US 421	Reconstruction	Reconstruct US 421 from the Leslie/Harlan County Line to MP 2.00.
11-5010.00	Leslie	US 421	LANDSLIDE REPAIR(P)	LANDSLIDE REPAIR ON US-421 FROM 0.2 MILE SOUTH JCT. KY-406 AT STINNETT NORTH 1.0 MILE. (2002BOPC) (10CCR)

IP20080618	Leslie	US 421	Relocation	Address horizontal alignment, surface condition, and congestion issues in order to improve connectivity, mobility, and safety on US 421 from Trace Branch/Warbranch Road to Mozelle.
11-8951.00	Leslie	US 421	CONGESTION MITIGTN(O)	CONSTRUCT RIGHT TURN LANE ON US 421 AT INTERSECTION WITH KY 80. (16CCN)(18CCN)
11-80002.00	Leslie	KY 3424	SAFETY(P)	SAFETY IMPROVEMENTS ON KY 3424 FROM MP 1.1 TO MP 1.5.(18CCN)
11-80109.00	Leslie	KY 1807	GUARDRAIL REPLCMNT(P)	GUARD RAIL INSTALLATION ON WOOTEN RD FROM MP 0.089 TO MP 3.567 AS NEEDED (2020CCN)
11-80004.00	Leslie	KY 1482	SAFETY(P)	INSTALL NEW GUARDRAIL ON KY 1482 FROM MP 0 TO MP 1.9.(18CCN)
11-80007.00	Leslie	KY 118	SAFETY(P)	CONSTRUCT A SECONDARY RUNAWAY TRUCK RAMP ON KY 118 (HYDEN SPUR) JUST BEFORE THE INTERSECTION WITH KY 80/US 421 TO INCLUDE A NEW BOX CULVERT OR BRIDGE AT THE INTERSECTION (18CCN) (2020CCR)
IP20100046	Leslie	KY 699	Bridge Replacement	Realign existing curve ending 0.060 miles West of KY 3427 and replace bridge over Cutshin Creek (0066B00033N SR=61.0)
11-8516.00	Leslie	KY 1482	NEW ROUTE(O)	CONSTRUCT A NEW APPROACH FROM KY 1482 ONTO THE HAL ROGERS PARKWAY AT MP 39 (08CCN)(10CCR)(2011BOPP)(18CCN) (2020CCR)
11-80003.00	Leslie	KY 2009	SAFETY(P)	INSTALL NEW GUARDRAIL ON KY 2009 FROM MP 13.418 TO MP 14.767.(18CCN)
11-80005.00	Leslie	KY 257	SAFETY(P)	INSTALL NEW GUARDRAIL ON KY 257 FROM MP 5.723 TO MP 5.853.(18CCN)
11-80006.00	Leslie	KY 1807	SAFETY(P)	INSTALL NEW GUARDRAIL ON KY 1807 FROM MP 0.914 TO MP 1.256.(18CCN)
11-80108.00	Leslie	KY 1482	GUARDRAIL REPLCMNT(P)	GUARD RAIL INSTALLATION ON BULL SKIN RD MP 1.582 TO MP 2 (2020CCN)
12-199.50	Letcher	US 119	RECONSTRUCTION(O)	RECONSTRUCT US-119 BY WIDENING TO 4-LANES ALONG A NEW ALIGNMENT (ORANGE) THROUGH THE GATEWAY INDUSTRIAL PARK TO US-23, INCLUDING US-23 FLYOVER RAMP.(16CCN)
12-8702.00	Letcher	KY 805	CONGESTION MITIGTN(O)	IMPROVE THE EXISTING ROADWAY TO MEET CURRENT STANDARDS AND IMPROVE CONGESTION INTO AND OUT OF JENKINS BETWEEN MP 9.176 AND MP 9.247.

12-8909.00	Letcher	PF 9999	RECONSTRUCTION(O)	UPGRADE KY-160 (ROXANA-VAN ROAD) WITH SHOULDER/BREAK REPAIRS, CULVERT EXTENSIONS, AND DRAINAGE UPGRADES. (16CCN)
12-311.80	Letcher	US 119	RECONSTRUCTION(O)	RECONSTRUCTION OF US-119 FROM 0.15 MILE WEST OF KY-806 TO KY-932. 2012BOP
IP20210100	Letcher	KY 113		Spot improvements along KY 113 from KY 2545 to Landfill Rd where the Letcher County Transfer Station is located.
12-80114.00	Letcher	KY 3401	CONGESTION MITIGTN(O)	INSTALL A LEFT TURN AT INTERSECTION OF KY 15 AND KY 3401 (2020CCN)
12-8702.10	Letcher	KY 805	CONGESTION MITIGTN(O)	IMPROVE THE EXISTING ROADWAY TO MEET CURRENT STANDARDS AND IMPROVE CONGESTION INTO AND OUT OF JENKINS BETWEEN MP 8.554 AND MP 9.176.
IP20180085	Letcher	KY 588	Spot Improvement	Road improvements on KY 588 from Tolson Branch to the intersection of KY 588 and KY 160 in the Roxana community. A federal prison is planned to be built in this area.
12-80115.00	Letcher	KY 463	GUARDRAIL REPLCMNT(P)	INSTALL A GUARD RAIL ON KY 462 NEAR GORDON PARK (2020CCN)
12-80113.00	Letcher	KY 3404	BRIDGE REHAB(P)	RECONSTRUCT THE BRIDGE OVER COLLIER'S CREEK BRIDGE TO CORRECT A DIP (2020CCN)
IP20150006	Owsley	KY 30	Reconstruction	Reconstruction of KY 30 from 0.028 miles West of Smokey Ln. to Breathitt County line. See KY 30 Planning Study September 2014 Alternate 1A
IP20110014	Owsley	KY 28	Reconstruction	Reconstruct KY 28 from 0.377 miles West of KY 2024 to Smith Cemetery Rd.
10-80105.00	Owsley	KY 11	RECONSTRUCTION(O)	RECONSTRUCT THE INTERSECTION OF KY 11 AND KY 846 (2020CCN)
IP20110012	Owsley	KY 708	Bridge Replacement	Replace bridge over Moores Fork and realign roadway.
10-269.20	Perry	KY 15	MAJOR WIDENING(O)	RECONSTRUCTION OF KY 15 FROM BONNYMAN TO NEAR KY 28. (14CCN) (2020CCN)
10-8906.00	Perry	KY 80	SAFETY(P)	SAFETY IMPROVEMENTS ON KY-80 FROM LESLIE COUNTY LINE TO KY-451. (16CCN)
10-209.00	Perry	KY 476	RECONSTRUCTION(O)	IMPROVE KY-476 FROM KY-15X IN WALKERTOWN TO NORTH OF WALKER CORNETT ROAD IN WABACO.
IP20210167	Perry	KY 15	Transportation Study	Planning Study to update numbers and determine feasibility of widening KY 15 from Hazard to Whitesburg.

IP20210168	Perry	KY 451	Reconstruction	Reconstruction from Woodland Park Bridge to KY 15X in Hazard.
IP20210051	Perry	KY 80	Safety-Haz-Elm	Reconstruct existing roadside rock cut on KY 80 from MP 14.30 to MP 14.85.
IP20060277	Perry	KY 1440	Reconstruction	Reconstruct roadway to eliminate flooding beginning at the intersection with KY 550.
IP20210052	Perry	KY 7	Reconstruction	Address roadway slide on KY 7 from MP 9.8 to MP 10.0.
10-8903.00	Perry	HR 9006	NEW INTERCHANGE(O)	NEW INTERCHANGE OFF OF A NEW EXIT 55 HAL ROGERS PARKWAY. (16CCN)(18CCN)
10-80100.00	Perry	CO 0	NEW ROUTE(O)	NEW IMPROVED ACCESS TO WENDALL FORD AIRPORT (2020CCN)
10-8102.00	Wolfe	KY 191	SAFETY(P)	HILL AND CURVE CORRECTION ON KY-191 BETWEEN HAZEL GREEN AND KY-205. (02CCN)(08CCR)(10CCR)
IP20200030	Wolfe	KY 15	Minor Widening	Minor widening to improve redundancy of Regional travel.
IP20060278	Wolfe	KY 191	Reconstruction	Reconstruction of KY 191 from KY 746 to 0.378 miles East of Lackey Rd.
10-212.00	Wolfe	KY 191	RECONSTRUCTION(O)	IMPROVE THE KY-191 AND KY-1812 INTERSECTION.

**KRADD WATER PRIORTIZATION PROJECTS
FISCAL YEAR '22**

Regional Rank By Points	Entity's Priority	County	PNUM	Applicant	Project Title	Total Points	Tie Breaker
10	1	Breathitt	WX21025008	Breathitt County Water District	HWY 30 East and Wolf Creek RD Waterline Extension	75	\$395
27	2	Breathitt	WX21025055	Breathitt County Water District	Breathitt Waterline Extensions Phase 3	60	\$38,372
25	1	Breathitt	WX21025061	City of Jackson	Barge Creek Road Waterline Extension	60	\$31,294
20	2	Breathitt	WX21025053	City of Jackson	North Jackson Water Improvement Project	60	\$2,857
9	1	Knott	WX21119025	Knott County Fiscal Court	Garner MT Pump Station Replacement Project	80	\$2,458
26	2	Knott	WX21119028	Knott County Water & Sewer District	KY RT 2029 Quicksand and Saltlick Waterline Extension Project	60	\$34,287
8	1	Knott	WX21119029	City of Hindman	Hindman Radio Read Meter Project	80	\$1,025
4	1	Lee	WX21129009	City of Beattyville	Water Treatment Plant Phase 2	95	\$409
17	2	Lee	WX21129011	City of Beattyville	Southside Waterline Replacement Project Phase 1	65	\$4,000
7	1	Leslie	WX21131013	Hyden-Leslie County Water District	Leslie Waterline Replacement Phase 1	85	\$2,204
23	2	Leslie	WX21131012	Hyden-Leslie County Water District	Leslie Waterline Extension Phase 1	60	\$16,151
22	1	Letcher	WX21133038	City of Fleming-Neon	Waterline Improvement Project Phase 3	60	\$6,604
6	1	Letcher	WX21133031	City of Jenkins	Elkhorn Lake Improvements Phase 1	85	\$1,790
18	2	Letcher	WX21133067	City of Jenkins	Jenkins Waterline Replacement Phase 6	65	\$76,923
16	2	Letcher	WX21133016	Letcher County Water & Sewer District	Letcher-HWY 510/Gordon Water Line Extensions	70	\$26,190

2	1	Letcher	WX21133057	Letcher County Water & Sewer District	Letcher County WTP Project	110	\$10,000
15	1	Letcher	WX21133068	City of Whitesburg	Whitesburg Waterline Improvement Phase (Downtown)	70	\$11,203
13	2	Letcher	WX21133065	City of Whitesburg	Waterline Replacement Phase 1	75	\$10,779
11	2	Owsley	WX21189014	City of Booneville	Water Pump Station Replacement	75	\$2,000
3	1	Owsley	WX21133047	City of Booneville	Booneville Water Treatment Plant Rehabilitation	100	\$1,087
1	1	Perry	WX21193034	City of Hazard/ Village of Buckhorn	Buckhorn Water Treatment Plant	115	\$7,482
5	1	Perry	WX21193059	City of Hazard/ Village of Buckhorn	Buckhorn WTP and Raw Water Intake Project	90	\$897
14	2	Perry	WX21193046	City of Hazard	Lothair Waterline Replacement	70	\$7,040
19	1	Perry	WX21193056	Perry County Fiscal Court	Perry County Various Roads Water Project	60	\$2,570
21	2	Perry	WX21193061	Perry County Fiscal Court	Sky View Estates Waterline Extension Project	60	\$15,628
12	1	Wolfe	WX21237014	City of Campton	Hazel Green Waterline Extension	75	\$4,315
24	2	Wolfe	WX21237016	City of Campton	KY 715 Waterline Replacement Phase 1	60	\$25,476

**KRADD WASTEWATER PRIORTIZATION
FISCAL YEAR '22**

Regional Rank By Points	Entity's Priority	County	PNUM	Applicant	Project Title	Total Points	Tie Breaker
5	1	Breathitt	SX21025014	City of Jackson	Jackson Sewer Rehabilitation Phase II	85	\$5,000
9	2	Breathitt	SX21025011	City of Jackson	Jackson Wastewater Plant Upgrade	85	\$35,016
12	1	Knott	SX21119013	City of Hindman	Hindman Sewer Rehabilitation	80	\$2,873
17	2	Knott	SX21119009	Troublesome Creek Environmental Authority	Ball Creek Possum Trot Phase III Wastewater Line Extension	70	\$16,500
8	1	Knott	SX21193020	Troublesome Creek Environmental Authority	HWY 80 Sewer Collection Project Phase III	85	\$17,703
2	1	Lee	SX21129011	City of Beattyville	Beattyville Sewer Replacement Phase 2	95	\$2,296
10	2	Lee	SX21129009	City of Beattyville	Sewer Lift Station Rehabilitation	80	\$1,461
7	1	Leslie	SX21129002	City of Hyden	Hyden-Wastewater Expansion Phase II	85	\$14,000
11	2	Leslie	SX21131005	City of Hyden	Hyden Wastewater Rehabilitation	80	\$2,353
16	1	Letcher	SX21133023	City of Whitesburg	Whitesburg I & I Phase 1	75	\$13,393
6	1	Letcher	SX21133016	City of Fleming-Neon	Fleming-Neon WWTP Upgrade	85	\$6,264
3	1	Letcher	SX21133020	City of Jenkins	Jenkins-Wastewater Treatment Plant Improvements	95	\$2,715
15	2	Letcher	SX21133024	City of Jenkins	Sewer I & I	75	\$790
4	1	Owsley	SX21189006	City of Booneville	Booneville Pump Station Rehab Phase 2	95	\$2,950
23	1	Perry	SX21193027	City of Buckhorn	Buckhorn Sanitary Sewer Line & WTP Raw Water Intake	65	\$493,300

1	1	Perry	SX21193025	City of Hazard	Hazard Sanitary Trunk Replacement	100	\$1,066
20	1	Perry	SX21193021	Perry County Fiscal Court	Sanitary Sewer Extension - Upper Second Creek - Phase 1	70	\$28,906
18	1	Perry	SX21193028	Perry County Sanitation District	Wendell H. Ford Airport Phase 1	70	\$23,257
19	2	Perry	SX21193029	Perry County Sanitation District	Wendell H. Ford Airport Phase 2	70	\$23,636
13	2	Perry	SX21193024	City of Hazard	Hazard Sanitary Sewer Lift Stations Replacement	80	\$3,313
21	2	Perry	SX21193033	Perry County Fiscal Court	Sky View Estates Sewer Extension	70	\$30,547
14	1	Wolfe	SX21237008	City of Campton	Campton Sewer Rehabilitation Project	80	\$26,719
22	2	Wolfe	SX21237007	Wolfe County Sanitation District	Hazel Green Wastewater Collection System Phase 1	70	

EVALUATION / PERFORMANCE MEASURES

The strategic plan will be reviewed annually. During the coming year, under the oversight of the Board of Directors and Staff assistance, each committee of the KRADD Board of Directors will be responsible for implementation of the various development strategies. The committees will continue to function to ensure that implementation takes place. Periodic reports will be made to the Kentucky River ADD Board of Directors, the Comprehensive Economic Development Strategy Committee, other appropriate groups and individuals directly involved with the various strategies of projects. Work will continue with various community groups to implement specific strategies at the community level.

Several performance measures will be utilized to evaluate the success of this document which includes:

1. Number of jobs created
2. Number and types of investment
3. Number of jobs retained
4. Amount of Private Sector Investment
5. Median Household Income
6. Unemployment Rate
7. Poverty Rate
8. Population
9. Education Attainment Rate

KRADD Board of Directors		
OFFICERS		
Laura Thomas	Chairman	Mayor of Jackson
Charles Chuck Caudill, Jr.	Vice-Chairman	Lee County Judge Executive
Tom Burns	Treasurer	Mayor
Fred Hall	Secretary	Citizen Member
Jeff Dobson	Parliamentarian	Knott County Judge Executive
NAME	TITLE	BOARD POSITION
BREATHITT COUNTY		
Jeff Noble	Judge Executive	Member
Laura Thomas	Mayor City of Jackson	Chairman
Ray Moore		Citizen Member
Roy Darrell Herald		Citizen Member
Gary Campbell		Citizen Member
KNOTT COUNTY		
Jeff Dobson	Judge Executive	Parliamentarian
Scott Cornett	Mayor City of Pippa Passes	Member
Tracy Niece	Mayor City of Hindman	Vice-Chairman
Larry Perkins		Citizen Member
Zach Sandlin		Citizen Member
Larry Parke		Citizen Member
LEE COUNTY		
Chuck Caudill, Jr.	Judge Executive	Vice-Chairman
Scott Jackson	Mayor City of Beattyville	Member
Everett Marshall		Citizen Member
Doug Brandenburg		Citizen Member
LESLIE COUNTY		
William Lewis	Judge Executive	Member
Carol Joseph	Mayor City of Hyden	Member
Hiram Cornett		Citizen Member
Eugene Stewart		Citizen Member
LETCHER COUNTY		
Terry Adams	Judge Executive	Member
Todd DePriest	Mayor City of Jenkins	Member
James W. Craft	Mayor City of Whitesburg	Member
Susan Polis	Mayor City of Fleming-Neon	Member
Jack Burkich		Citizen Member
Fred Hall		Secretary
OWSLEY COUNTY		
Cale Turner	Judge Executive	Member
Nelson Bobrowski	Mayor City of Booneville	Member
Dale Bishop		Citizen Member
PERRY COUNTY		
Scott Alexander	Judge Executive	Member
Donald Mobelini	Mayor City of Hazard	Member
Tom Burns	Mayor Village of Buckhorn	Treasurer
Ernest Back	Mayor City of Vicco	Member
Derrick Bowling		Citizen Member
Gregory Whitson		Citizen Member
Lonnie Brewer		Citizen Member
Meriwether Wash-Hall		Citizen Member
WOLFE COUNTY		
Raymond Banks	Judge Executive	Member
Kathi May	Mayor City of Campton	Member
Shirley Halcomb		Citizen Member
Pam Pilgrim		Citizen Member

KRADD 2021 CEDS COMMITTEE (Board of Directors & Staff Members)

COUNTY	NAME	TITLE/ORGANIZATION
Regional	Michelle Allen	Executive Director, KRADD
Regional	Jennifer McIntosh	Associate Director of Economic Development, KRADD
Regional	Eunice Holland	Associate Director of Economic Development/Transportation Planner, KRADD
Regional	Jesse Riley	Economic Development Coordinator
Regional	Lisa Napier	Grant Writer/Administrator
Regional	Cheryl Honkomp	Disaster Coordinator
Regional	Melissa Brewer	Grant Writer/Administrator
Regional	David Baker	Public Administration Specialist
Perry	Scott Alexander	Judge Executive
Perry	Donald "Happy" Mobelini	Mayor City of Hazard
Perry	Betsy Clemons	Perry County Chamber of Commerce
Regional	Trish Adams	EKCEP
Knott	Jeff Dobson	Judge Executive
Knott	Tracy Niece	Mayor City of Hindman
Knott	Scott Cornett	City of Pippa Passes
Breathitt	Jeff Noble	Judge Executive
Breathitt	Laura Thomas	Mayor City of Jackson
Breathitt	Ellis Tincher	Private Business
Lee	Chuck Caudill	Judge Executive
Lee	Scott Jackson	Mayor City of Beattyville
Leslie	William Lewis	Judge Executive
Leslie	Carol Joseph	Mayor City of Hyden
Perry	Hank Spalding	Private Business
Letcher	Terry Adams	Judge Executive
Letcher	Susan Polis	Mayor City of Fleming-Neon
Letcher	James W. Craft	Mayor City of Whitesburg
Letcher	Todd DePriest	Mayor City of Jenkins
Owsley	Cale Turner	Judge Executive
Owsley	Charles Long	Mayor City of Beattyville
Owsley	Dale Bishop	Private Business
Wolfe	Dennis Brooks	Judge Executive
Wolfe	Raymond Banks	Mayor City of Campton

**KENTUCKY RIVER AREA DEVELOPMENT DISTRICT
STAFF**

NAME	TITLE		NAME	TITLE
Michelle Allen	Executive Director		Debi Maggard	Staff Accountant /Billing Clerk
Kim Coomer	Associate Director of Finance		Kimberly Allen	Executive Assistant
Karlana Campbell	Human Resource Coordinator		Trish Mullins	Staff Accountant /Billing Clerk
Jennifer McIntosh	Associate Director of Economic Development/ Water & Wastewater Planner		Lisa Napier	Grant Writer /Administrator
Eunice Holland	Associate Director of Economic Development/ Transportation Planner		Megan Stepp	IT Manager
Donna Williams	Staff Accountant		Cheryl Honkomp	Disaster Coordinator
Desiree Walker	Staff Accountant		Tammy Ritchie	Administrative Assistant
Jesse Riley	Economic Development Coordinator		Tammy Couch	Administrative Assistant
Stacie Noble	Associate Director, Human Services		Scott Melton	GIS/GPS Technician
Tracy Baker	ADRC and SHIP Coordinator		Stephanie Caudill	Homecare Aide
Melissa Brewer	Community and Economic Development Specialist		Melissa Cornett	Homecare Aide
David Baker	Public Administration Specialist		Andrea Graham	Homecare Aide
Keisha Combs	Participated Directed Services Advisor		Pauline Simpson	Homecare Aide
Sheila Cornett	Long Term Care Ombudsman		Heather Troutt	Homecare Aide
Sherry Burchell	Human Services Planner		Teresa Bowling	Senior Center Director
Gerri Fletcher	PDS Service Advisor		Betty Snowden	Senior Center Staff
Angela Robbins	PDS Service Advisor		Debbie Baker	Senior Center Director
Bailey Stidham	PDS Service Advisor		Carmen Brock	Senior Center Staff
Dakota Hall	PDS Service Advisor		Dena Brooks	Senior Center Director
Karen Amburgey	PDS Service Advisor		Donna Ertel	Cook/Server
Andrea Dixon	PDS Service Advisor		Andrea Graham	Homecare Aide
Jake Dixon	PDS Service Advisor		Heather Trout	Homecare Aide
Autumn Mullins	Homecare Case Manager		Rhonda Moore (Part-time)	Support Staff
Angela Robbins	PDS Service Advisor /Case Manager		Jessica Smith (Part-time)	PDS Service Advisor
Emily Slone	PDS Service Advisor			
Mattie Turner	Human Services Coordinator			
Jessica Wireman	PDS Service Advisor			
Jessica Leedy	Human Services Planner			

Jane Olinger	Aging Assistant and SHIP Coordinator		
--------------	-----------------------------------------	--	--

Kentucky River ADD Demographic Data Updates

POPULATION HISTORY

AREA	1970	1980	1990	2000	2010
KRADD	107,245	134,437	123,495	120,656	114,762
BREATHITT	14,221	17,004	15,703	16,100	13,878
KNOTT	14,698	17,940	17,906	17,649	16,346
LEE	6,587	7,754	7,422	7,916	7,887
LESLIE	11,623	14,882	13,642	12,401	11,310
LETCHER	23,165	30,687	27,000	25,277	24,519
OWSLEY	5,023	5,709	5,036	4,858	4,755
PERRY	26,259	33,763	30,283	29,390	28,712
WOLFE	5,669	6,698	6,503	7,065	7,355

POPULATION CHANGE %

AREA	1990	2000	2010	% CHANGE
KRADD	123,495	120,656	114,762	-7.07%
Breathitt	15,703	16,100	13,878	-11.6%
Knott	17,906	17,649	16,346	-8.7%
Lee	7,422	7,916	7,887	-.04%
Leslie	13,642	12,401	11,310	-17.3%
Letcher	27,000	25,277	24,519	-9.2%
Owsley	5,036	4,858	4,755	-5.6%
Perry	30,283	29,390	28,712	-5.2%
Wolfe	6,503	7,065	7,355	+11.5%

**Poverty Rates. Per Capita Income & Median Household Income
2018**

AREA	% poverty	Per Capita Income	Median Household Income
Breathitt County	32.5%	\$17,729	\$26,326
Knott County	32.1%	\$18,201	\$29,326
Lee County	34.4%	\$17,179	\$23,972
Leslie County	30.8%	\$15,691	\$30,798
Letcher County	31.1%	\$18,811	\$29,856
Owsley County	39.2%	\$17,766	\$25,530
Perry County	28.9%	\$20,140	\$31,046
Wolfe County	31.4%	\$14,113	\$22,458

KRADD EMPLOYMENT STATISTICS

2019 Area Employment for KRADD = 37,490 Top 2019 Employment Industries

	Breathitt	Knott	Lee	Leslie	Letcher	Owsley	Perry	Wolfe
Heath Care & Social Asst	1014	528	338	473	1071	230	3506	312
Educational Serv	433	619	161	329	687	149	1142	244
Retail Trade	444	229	189	200	689	87	1642	157
Wholesale Trade								106
Public Admin	290	183	189	153		67		105
Mining, Oil & Gas Extract		152		154	373		775	
Transportation & Warehousing						27		
Accomodation & Food Service	219		287		363		912	
# of jobs per industry								

Direct Mine Employment 2009			Direct Mine Employment 2015			Percent Change
Breathitt County	110		Breathitt County	48		-56.37%
Knott County	1,327		Knott County	252		-81.00%
Lee County	104		Lee County			-100.00%
Leslie County	N/R*		Leslie County	245		
Letcher County	1,191		Letcher County	185		-84.46%
Owsley County			Owsley County	3		
Perry County	2,292		Perry County	966		-57.85%
Wolfe County			Wolfe County	10		

Direct Mine Employment 2015			Direct Mine Employment 2017			Percent Change
Breathitt County	48		Breathitt County	6		-87.50%
Knott County	252		Knott County	72		-71.42%
Lee County			Lee County			
Leslie County	245		Leslie County	209		-14.69%
Letcher County	185		Letcher County	36		-80.54%
Owsley County	3		Owsley County			-100.00%
Perry County	966		Perry County	649		-32.81%

Wolfe County	10	Wolfe County	-100.00%
--------------	----	--------------	----------

Direct Mine Employment 2018		Direct Mine Employment 2019		Percent Change
Breathitt County	13	Breathitt County	3	-76.92%
Knott County	98	Knott County	129	+3.16%
Lee County		Lee County		
Leslie County	304	Leslie County	234	-23.03%
Letcher County	98	Letcher County	218	+77.76%
Owsley County		Owsley County		
Perry County	679	Perry County	565	-16.79%
Wolfe County		Wolfe County		

*N/R – No Reporting submitted – Counties with less than 3 employers or one employer with 80% of the total county miner workforce were withheld

Major Employers in KY River ADD Counties

Employer	City/County	Estimated #
KY River Medical Center	Jackson/Breathitt	250-499
Wal-Mart	Jackson/Breathitt	100-249
Nim Henson Geriatric Center	Jackson/Breathitt	100-249
Breathitt County Board of Education	Jackson/Breathitt	100-249
Lees College	Jackson/Breathitt	50-99
Jackson Independent Schools	Jackson/Breathitt	50-99
Home Health	Jackson/Breathitt	50-99
Juvenile Justice Center	Jackson/Breathitt	50-99
Appalachian Regional Manufacturing	Jackson/Breathitt	0-50
Jackson Wholesale Company	Jackson/ Breathitt	0-50
TVS Cable, Inc.	Hindman/Knott	100-249
Alice Lloyd College	Pippa Passes/Knott	100-249
Knott Co Health & Rehab	Hindman/Knott	100-249
Knott County Board of Education	Hindman/Knott	250-499
Casey's /GA Foods	Hindman/Knott	50-99
Thacker Grigsby Phone	Hindman/Knott	50-99
Lee Adjustment Center	Beattyville/Lee	100-249
Lion Apparel	Beattyville/Lee	100-249
Lee County Care & Rehab Center	Beattyville/Lee	100-249
Xerox	Beattyville/Lee	0-50
TeleWorks USA	Beattyville/Lee	0-50
Mary Breckenridge ARH Clinic	Hyden/Leslie	100-249
Hyden Health & Rehab Center	Hyden/Leslie	100-249
Leslie County Schools	Hyden/Leslie	50-99
TeleWorks USA	Hyden/Leslie	0-50
BPM Lumber	Hyden/Leslie	0-50
Whitesburg ARH Hospital	Whitesburg Letcher	250-499
Premier Elkhorn Coal Co.	Jenkins/Letcher	100-249
Letcher Manor	Whitesburg/Letcher	100-249
Wal-Mart	Whitesburg/Letcher	100-249
Food City	Whitesburg/Letcher	100-249
Mountain Comprehensive Health	Whitesburg/Letcher	100-249
Letcher County Schools	Whitesburg/Letcher	100-249
BPM Lumber	Whitesburg/Letcher	50-99
Whitaker Bank Corp.	Whitesburg/Letcher	50-99
Healthcare National Marketing	Jenkins/Letcher	50-99
McDonalds	Whitesburg Letcher	50-99
Southeast KY Community College	Whitesburg /Letcher	50-99
Owsley County Schools	Booneville/Owsley	100-249
Owsley County Healthcare	Booneville/Owsley	100-249
TeleWorks USA	Booneville/Owsley	0-50
Hazard ARH Regional Medical Center	Hazard/Perry	500-999
Sykes Enterprises	Chavies/Perry	100-249
Perry County Coal Corp.	Hazard/Perry	100-249

Blue Diamond Coal Co.	Leatherwood/Perry	100-249
Hazard Community & Technical College	Hazard/Perry	250-499
Eastern KY Veterans Center	Hazard/Perry	100-249
Food City	Hazard/Perry	100-249
Hazard Health & Rehab Center	Hazard/Perry	100-249
Wayne Supply Co.	Hazard/Perry	100-249
Lowes Home Improvement	Hazard/Perry	100-249
Perry County Schools	Hazard/Perry	100-249
UK Center for Rural Health	Hazard/Perry	100-249
Buckhorn Children's Foundation	Hazard/Perry	50-99
LKLP Community Action Agency	Hazard/Perry	50-99
AAA Mine Service	Hazard/Perry	50-99
Dajcor Aluminum	Hazard/Perry	0-50
TeleWorks USA	Hazard/Perry	0-50
Wolfe County Health Care Center	Campton/Wolfe	100-249
Dessie Scott Children 's Home	Pine Ridge/Wolfe	50-99
Wolfe County Schools	Campton/Wolfe	50-99
Lion Distribution	Hazel Green/Wolfe	50-99
Kentucky River Community Care	Regional	500+

Kentucky River Comprehensive Economic Development Strategy

Resolution

WHEREAS, the Kentucky River Area Development District is one of fifteen Area Development Districts within the Commonwealth of Kentucky; and

WHEREAS, the Kentucky Area Development Districts, in coordination with the Governor's Office of the Department for Local Development and the Economic Development Administration, engaged in a Commonwealth-wide community-based, strategic planning process known as **the Comprehensive Economic Development Strategy**; and

WHEREAS, the Kentucky River Area Development District Board of Directors, through it's CEDS Committee, completed a Comprehensive Economic Development Strategy (CEDS); and

WHEREAS, the CEDS is a process enabling Kentuckians to strategically plan for themselves through consensus management of all resources; and

WHEREAS, the Board of Directors recognizes this plan as the Kentucky River Area Development District's consensus for future growth and revitalization in the region.

NOW, THEREFORE, BE IT RESOLVED, that the Kentucky River Area Development District Board of Directors approve and adopt the Kentucky River Comprehensive Economic Development Strategy document to the Economic Development Administration and Department for Local Development.

Adopted this 27th day of October 2021.

Chairman

Michelle Allen
Executive Director